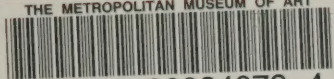


THE METROPOLITAN MUSEUM OF ART



3 0620 00934079 4

119.8

T
1943

THE METROPOLITAN MUSEUM
OF ART

7

THE LIBRARY



PRESENTED BY

~~PARKE-BERNET GALLERIES~~

103117



PRICED

PRECIOUS-STONE
JEWELRY

A GROUP OF FURS

All from Private Owners

INCLUDING PROPERTY OF THE ESTATES OF THE LATE

GRACE RAINEY ROGERS

COMMODORE EDGAR F. LUCKENBACH

ISIS Y. STOCKTON BURLEIGH

New York



Public Auction Sale
November 17 and 18 at 2 p. m.

PARKE-BERNET GALLERIES · INC

30 EAST 57 STREET · NEW YORK 22

1943

CONDITIONS OF SALE

The property listed in this catalogue will be offered and sold subject to the following terms and conditions:

1. The word "Galleries", wherever used in these Conditions of Sale, means the Parke-Bernet Galleries, Inc.
2. The Galleries has exercised reasonable care to catalogue and describe correctly the property to be sold, but it does not warrant the correctness of description, genuineness, authenticity or condition of said property.
3. Unless otherwise announced by the auctioneer at the time of sale, all bids are to be for a single article even though more than one article is included under a numbered item in the catalogue. If, however, the articles under any one numbered item are designated as a "Lot" then bids are to be for the lot irrespective of the number of articles described in such item.
4. The highest bidder accepted by the auctioneer shall be the buyer. In the event of any dispute between bidders, the auctioneer may, in his discretion, determine who is the successful bidder, and his decision shall be final; or the auctioneer may reoffer and resell the article in dispute.
5. Any bid which is not commensurate with the value of the article offered, or which is merely a nominal or fractional advance over the previous bid, may be rejected by the auctioneer, in his discretion, if in his judgment such bid would be likely to affect the sale injuriously.
6. The name and address of the buyer of each article, or lot, shall be given to the Galleries immediately following the sale thereof, and payment of the whole purchase price, or such part thereof as the Galleries may require, shall be immediately made by the purchaser thereof. If the foregoing condition, or any other applicable condition herein, is not complied with, the sale may, at the option of the Galleries, be cancelled, and the article, or lot, reoffered for sale.
7. Unless the sale is advertised and announced as an unrestricted sale, or a sale without reserve, consignors reserve the right to bid.
8. Except as herein otherwise provided, title will pass to the highest bidder upon the fall of the auctioneer's hammer, and thereafter the property is at the purchaser's sole risk and responsibility.
9. Articles sold and not paid for in full and not taken by noon of the day following the sale may be turned over by the Galleries to a carrier to be delivered to a storehouse for the account and risk of the purchaser, and at his cost. If the purchase price has not been so paid in full, the Galleries may either cancel the sale, and any partial payment already made shall thereupon be forfeited as liquidated damages, or it may resell the same, without notice to the buyer and for his account and risk, and hold him responsible for any deficiency.

10. If for any cause whatsoever any article sold cannot be delivered, or cannot be delivered in as good condition as the same may have been at the time of sale, the sale will be cancelled, and any amount that may have been paid on account of the sale will be returned to the purchaser.

11. Unless purchased for resale, the buyer will be required to pay the Federal Excise Tax equivalent to 10 per centum of the price for which sold on jewelry, clocks, silver, gold, furs, etc. However, articles of these categories sold for certain classes of consignors are exempt from this tax. Items in this catalogue subject to the Federal Excise Tax are designated by an asterisk (*).

12. Unless exempt from the payment thereof, the buyer will also be required to pay the New York City sales tax of 1 per centum of the price for which all articles are sold.

13. The Galleries, subject to these Conditions of Sale and to such terms and conditions as it may prescribe, but without charge for its services, will undertake to make bids for responsible parties approved by it. Requests for such bidding must be given with such clearness as to leave no room for misunderstanding as to the amount to be bid and must state the catalogue number of the item and the name or title of the article to be bid on. If bids are to be made on several articles listed as one item in the catalogue, the request should state the amount to be bid on each article, unless the item contains the notation "Lot", in which case the request should state the amount to be bid "For the Lot". The Galleries reserves the right to decline to undertake to make such bids.

14. The Galleries will facilitate the employment of carriers and packers by purchasers but will not be responsible for the acts of such carriers or packers in any respect whatsoever.

15. These Conditions of Sale cannot be altered except in writing by the Galleries or by public announcement by the auctioneer at the time of sale.

SALES CONDUCTED BY

HIRAM H. PARKE • OTTO BERNET • HARRY E. RUSSELL, JR • LOUIS J. MARION

PARKE-BERNET GALLERIES • INC

30 EAST 57 STREET • NEW YORK

Telephone PLAZA 3-7573

Cable PARKGAL

HIRAM H. PARKE • *President*

OTTO BERNET • ARTHUR SWANN • LESLIE A. HYAM • *Vice-Presidents*
EDWARD W. KEYES • *Secretary and Treasurer*

NY 4100 - P1825

SALE NUMBER 500

EXHIBITION FROM SATURDAY, NOVEMBER 13, TO TIME OF SALE
WEEKDAYS 9 TO 5:30 / CLOSED SUNDAY

DIAMOND AND SAPPHIRE
Precious-Stone Jewelry

INCLUDING FINE DIAMOND RINGS
BRACELETS, CLIPS, BROOCHES AND NECKLACES
A 95-CARAT STAR SAPPHIRE RING

A GROUP OF FURS

All from Private Owners

With Property of Various Estates
Including the Estates of the Late

GRACE RAINEY ROGERS
COMMODORE EDGAR F. LUCKENBACH
ISIS Y. STOCKTON BURLEIGH

Sold by Order of Owners, Executors and Administrators
Including Property Sold by Order of the Attorneys
GAILLARD, FISHER, ALLEN & BATESON
New York



Public Auction Sale
November 17 and 18 at 2 p. m.

PARKE-BERNET GALLERIES · INC
30 EAST 57 STREET · NEW YORK 22 · 1943

PRICED CATALOGUES

A priced copy of this catalogue may be
obtained for one dollar for each
session of the sale plus
the cost of the
catalogue

None of the items in the present
catalogue is subject to the Fed-
eral Excise Tax as set forth in
paragraph 11 of the Conditions
of Sale.

FIRST SESSION

Wednesday, November 17, 1943, at 2 p.m.

CATALOGUE NUMBERS 1 TO 236 INCLUSIVE

1. IMITATION SAPPHIRE- AND DIAMOND-MOUNTED PLATINUM PENDANT
Square faceted imitation sapphire pendant mounted with twenty-four small round-cut diamonds; on link chain. (*Burleigh*)
2. ENAMELED SILVER DIAMOND-SHAPED PENDANT WATCH
Fifteen jewel, two-adjustment Swiss movement; black silk neck band with enameled silver gilt slide. (*de Rose*)
3. CARNELIAN AND PEARL NECKLACE
Link chain necklace and pendant set with carnelian and pearl beads. Together with pair of metal earrings. (*Burleigh*)
4. THREE NECKLACES
One with blue stone plaque suspended from link chain; one of alternate filigree silver and blue stone medallions; the other of blue beads on link chain, broken. (*Burleigh*)
5. PAIR FILIGREE GOLD EARRINGS
Yellow gold earrings, the ear clasps in engraved floral medallions and with filigree gold pendant. (*Mount Vernon Private Owner*)
5. PAIR GOLD-MOUNTED JADE CUFF LINKS
(*Mackenzie*)
7. GOLD LOCKET
Engraved gold case. (*Property of an Estate*)
3. LOT OF JEWELRY
Comprising pair of gold-mounted enameled pendants in the Japanese taste; silver gilt and garnet necklace. Together with approximately twelve carnelians, amethysts, etc. carved with various heads in high relief. [Lot.] (*N. Y. Private Owner*)
- 1A. DIAMOND- AND RUBY-MOUNTED KNIGHT TEMPLAR CHARM
Enameled gold charm with eight small rubies and eight small round diamonds. Together with black silk watch fob mounted with fourteen-carat gold medal; sterling silver 'dog brooch'; two enameled gilt metal charms. [Lot.] (*Property of an Estate*)

100-

15-

70-

20-

10-

15-

10-

110-

90-

65 9. PAIR BANGLE BRACELETS

Each set with eight topazes; silver mount. (*Burleigh*)

25 10. GOLD AND MOSAIC NECKLACE

Nine mosaic pendants suspended from mesh chain. Together with pair of mosaic pendant earrings. (*Burleigh*)

170 11. FIVE IMITATION PEARL NECKLACES

Together with a spiral bracelet of imitation pearls and a seed pearl neck bar on black velvet. (*de Rose*)

670 11A. LOT OF JEWELRY

Comprising gold brooch mount; miscellaneous lot of loose pearls; two moonstones; pale sapphire; small piece of platinum chain; lot of old silver including small chain purse; two baroque pearl necklaces, one with gold clasp set with six old-mine diamonds and a pale ruby; pair of gold mounted amethyst earring broken; assortment of colored stones; small gold pin set with small amethyst; pair of green bead earrings; and a miscellaneous lot of costume jewelry, coral beads, etc. [Lot.] (*Property of an Estate*)

15 12. LOT OF JEWELRY

Comprising oval brooch set with green stone surrounded by tiny seed pearls; pair of green stone pendant earrings. Together with six other items including buckle, brooch, etc. [Lot.] (*Burleigh*)

300 13. TWO BRACELETS

One of alternating moonstones, black enamel circlets and flattened oval gold links; the other of blue bead links. Together with pair of flexible oval link bracelets. (*Burleigh*)

20 14. LOT OF JEWELRY

Comprising pair of imitation jade pendant earrings in form of jardiniere or flowers; onyx and jade bead bracelet with Buddha pendant; pair of imitation button-pearl earrings; pair of imitation pearl, onyx and crystal earrings, one pearl missing. Together with a pair of floral enameled pendant earrings. [Lot.] (*Burleigh*)

10 15. TWO PAIRS TURQUOISE EARRINGS

One pair with silver and pearl mount, and with pearl-shaped turquoise matrix drops; the other with carved turquoise and seed pearl tassel. (*Mount Vernon Private Owner*)

70 16. GOLD MATCH BOX

Oval box with monogram. (*N. Y. Private Owner*)

17. OPEN-FACE POCKET WATCH
Eighteen-carat gold case with escapement movement and with short link chain with ball fob. (*N. Y. Private Owner*)
18. SILVER-MOUNTED PETIT POINT BAG
Engraved gilded silver clasp. (*N. Y. Private Owner*)
19. TWO SMALL ROUND-CUT DIAMONDS
Together with a gold thimble. (*L. I. Private Owner*)
20. EMERALD RING
Gold mount set with a square reconstructed emerald. (*Property of an Estate*)
21. GENTLEMAN'S GOLD-FILLED OPEN-FACE POCKET WATCH
Fitted with Elgin movement, the back monogrammed. (*Property of an Estate*)
22. GOLD SIGNET RING
Yellow gold ring of fourteen-carat gold with inset monogram. (*Property of an Estate*)
23. FOUR IMITATION PEARL NECKLACES
One of double-strand pearls; two single, one without clasp; and one pink pearl necklace. Together with a pear-shaped pearl drop on white gold chain. (*Property of an Estate*)
24. ENAMELED GOLD BROOCH
In form of a butterfly set with a single turquoise; some enamel chipped. (*Property of an Estate*)
25. SET OF AMETHYST-MOUNTED JEWELRY
Comprising pair of cuff links, six buttons and a scarf pin. (*Property of an Estate*)
26. PAIR GOLD-MOUNTED AMETHYST CUFF BUTTONS AND SCARF PIN
To MATCH
(*Property of an Estate*)
27. CRYSTAL NECKLACE
Necklace composed of sixty-seven graduated round faceted beads with pair of crystal earrings. Together with a blue bead necklace. (*Property of an Estate*)
28. PAIR CARVED GREEN JADE DIAMOND-SHAPED PLAQUETTES
Carved with chrysanthemum motive. (*West*)
29. PAIR CARVED FEI-TS'UI JADE EARRINGS
Oval floral carved *fei-ts'ui* jade plaques suspended from gold links in mounts of fourteen-carat gold. Together with pair of seed pearl and jadeite earrings with silver gilt mounts. (*Mount Vernon Private Owner*)

25-

40-

50-

12-

7⁰⁰

15-

12⁰⁰

30-

27⁰⁰17⁰⁰

10-

17⁰⁰

15-

10- 30. LADY'S GOLD WRIST WATCH

Oblong case of fourteen-carat gold with braided leather strap with gold-fill clasp. (N. Y. Private Owner)

7-00 31. PAIR BAROQUE PEARL EARRINGS

With ten-carat yellow gold mounts. (N. Y. Private Owner)

20- 32. GOLD NECK CHAIN

Fine woven neck chain of yellow gold mounted with seven flattened round lazuli beads. (L. I. Private Owner)

15- 33. PAIR GOLD-MOUNTED GREEN AGATE CUFF LINKS
(Mackenzie)

27-00 34. LADY'S GOLD PENDANT WATCH

With jewel movement, the back with *repoussé* figure decoration. (Property an Estate)

25- 35. LOT OF IMITATION PEARL JEWELRY

Comprising pair of earrings with gold mounts, pair of button-shaped pearl earrings, each set with a single round-cut diamond. [Lot.] (de Rose)

22-00 36. LOT OF COSTUME JEWELRY

Comprising necklace of green beads and small imitation pearls; three-strand pearl bead necklace with pearl cluster pendants suspended from black velvet ribbon; tortoise-shell lorgnette (one glass missing) with beaded neck chain; red bead necklace (no clasp); eight colored stone and enameled floral and other brooches; and a floral metal bracelet set with turquoises. Together with metal clip and fourteen buttons, small heart-shaped turquoise pendant, pair of blue stone cuff links and about twenty-two pieces odds and ends. [Lot.] (de Rose)

7-00 37. LOT OF JEWELRY

Comprising eight white, blue and black colored bead necklaces. [Lot.] (Burleigh)

7-00 38. LOT OF JEWELRY

Comprising four red bead necklaces; red brooch; filigree silver necklace centre with red stone; and floral mosaic gilded bracelet. [Lot.] (Burleigh)

17-00 39. TWO NECKLACES

Gold bead necklace of twenty-one graduated round beads on link chain; the other a silver gilt necklace containing approximately eighty filigree beads on link chain with tasseled ends. (Burleigh)

70- 40. TWELVE GOLD AND ENAMELED CHARMS

In the form of fish, jewel box, sailboat, mirror, horseshoe, etc. (Burleigh)

41. PAIR GOLD BROOCHES

Circular brooches, each containing a portrait miniature and one set with twenty rubies, some stones missing. (*Burleigh*)

45-

42. THREE GOLD LINK NECK CHAINS

One with cross; one with ball locket containing daguerreotypes. (*Burleigh*)

42⁰⁰

43. LOT OF AMETHYST-MOUNTED JEWELRY

Comprising four bar pins, five collar pins and heart-shaped pendant; all with gold mounts. Together with pair of imitation amethyst silver-mounted earrings, bar pin, and a pair of gilt metal earrings. [Lot.] (*Burleigh*)

115-

44. TWENTY-TWO PAIRS OF EARRINGS

Comprising imitation pearl, sapphire, jet, colored stones etc.; some with gold mounts. (*Burleigh*)

29⁰⁰

45. LOT OF COSTUME AND OTHER JEWELRY

In silver, gilt metal, etc., comprising clips, bracelets, brooches, etc. [Lot.] (*Burleigh*)

17⁰⁰

46. TWO GOLD-MOUNTED FLY BROOCHES

One a butterfly set with two olivines centred with rose diamond; the other a fly brooch centred with pearl wings set with ten small old-mine diamonds. (*Burleigh*)

80-

47. TWO OVAL FIERY OPALS

Unmounted. (*West*)

275-

48. LOT OF JEWELRY

Comprising amber and brown bead necklace divided by gilded filigree plaquettes; carved wood necklace; two bone necklaces sectionally divided by small beads; and two blue bead necklaces divided by small crystals. [Lot.] (*Burleigh*)

7⁰⁰

49. LOT OF RHINESTONE JEWELRY

Comprising five necklaces, one with four suspended circular stones. Together with two bracelets, one with five oval circles each inset with two large stones. [Lot.] (*Burleigh*)

30-

50. LOT OF JEWELRY

Comprising topaz and gilded necklace; two topaz brooches; beaded necklace. Together with carnelian necklace. [Lot.] (*Burleigh*)

12⁰⁰

51. LOT OF JEWELRY

Comprising eleven crystal necklaces, three divided by colored stones, and five pairs of earrings. [Lot.] (*Burleigh*)

17⁰⁰

52. LOT OF FOUR CARVED IVORY NECKLACES
 50 Comprising two carved single strand; one plain; the other with carved ivory and smoked crystal beads. [Lot.] (*Burleigh*)
53. LOT OF GARNET JEWELRY
 195 Comprising necklace with small clusters centred with large cluster; pair pendant earrings; and three brooches. [Lot.] (*Burleigh*)
54. LOT OF GOLD JEWELRY
 60 Comprising three pins and a braided hair bracelet with gold locket-clasp. [Lot] (*Burleigh*)
55. TWO GOLD-MOUNTED SAPPHIRE AND SEED PEARL BROOCHES
 70 Circular brooch set with ten sapphires and ten seed pearls; crescent brooch set with seven sapphires and ten seed pearls. (*Burleigh*)
56. AMETHYST GOLD-MOUNTED LINK CHAIN
 35 Chain of small oval links mounted with fifteen oval faceted amethysts set in bezels; together with amethyst pendant on tiny gold link chain. (*Burleigh*)
57. PEARL AND ONYX GOLD-MOUNTED CIRCULAR BROOCH
 270 Outer rim set with approximately twenty-eight small pearls, inner circle set with faceted onyx. (*Burleigh*)
58. TWO GOLD AND ENAMELED MEDALS
 20 'Daughters of the American Revolution' and 'Society of the Colonial Dame of America'. (*Burleigh*)
59. LOT OF GOLD JEWELRY
 85 Comprising six pins, four ring mounts, four guard rings, two wedding rings, seal, name bracelet, and pin, etc. [Lot.] (*Burleigh*)
60. TWO LADY'S GOLD WATCHES
 35 Pendant watch by Tiffany and a wrist watch with Swiss movement; and moiré strap. (*Burleigh*)
61. TWO GOLD NECKLACES
 90 Composed of double oval and circular links. Together with long gold and seed pearl neck chain. (*Burleigh*)
62. LOT OF JET AND BLACK ENAMEL JEWELRY
 40 Comprising bar pin, two pair earrings (broken), two lockets, and a pin; some set with seed pearls and rose diamonds. [Lot.] (*Burleigh*)
63. FOUR GOLD AND GOLD-FILLED LORGNETTES
 370 One with link chain and one contained in case. (*Burleigh*)

64. LADY'S GOLD WRIST WATCH
Hexagonal case with Swiss nineteen-jewel, six-adjustment movement; by Gorham; moiré silk band. (*Burleigh*)
65. LOT OF GOLD JEWELRY
Comprising pair of cuff links each set with a small round diamond, monogrammed; two thimbles; two pins set with tiny seed pearls; pair of earrings with pendant circlet enclosing beetle; pair of cuff buttons, monogrammed; etc. [Lot.] (*Burleigh*)
66. TWO HORSESHOE BROOCHES
One set with tiny seed pearls; the other with seven small diamonds, in platinum mount. (*Burleigh*)
67. TWENTY-TWO PAIRS EARRINGS
Comprising crystal, imitation diamonds, colored stones, etc.; some with gold mounts. (*Burleigh*)
68. TWO GOLD RINGS
One set with four old-mine diamonds and three small pearls, the other with a brown stone. (*Burleigh*)
69. LOT OF JEWELRY
Comprising gunmetal watch; speedometer; gold link chain mounted with lapis beads; fourteen-carat enameled gold powder box; black silk ribbon with six oval gold links mounted with tiny half pearls; gold seal ring; and approximately twelve odd pieces of gold. [Lot.] (*Burleigh*)
70. LADY'S GOLD WATCH
Eighteen-carat white gold case with fifteen-jewel, two-adjustment movement by Hoffman Watch Co.; the case set with four triangular sapphires and six small round-cut diamonds. (*Burleigh*)
71. TOPAZ AND PEARL BROOCH
In gold mount; the oval faceted topaz surrounded by eighteen small round pearls. (*Burleigh*)
72. PAIR PEARL EARRINGS
Pear-shaped pearl earrings having a total weight of approximately 20 grains, set with a single round-cut diamond weighing approximately .20 carat. One diamond missing. (*California Private Owner*)
73. JADE BEAD NECKLACE AND PAIR EARRINGS
Necklace of seventy-five graduated round beads each separated by tiny crystal beads. Together with pair of gold-mounted pear-shaped jade drops. (*L. I. Private Owner*)

50-

70-

65-

170-

470-

85-

350-

1800-

40-

75-

- 40- 74. GENTLEMAN'S WATCH CHAIN
Composed of alternating oblong links of white and yellow gold. (*Mackenz*)
- 35- 75. LOT OF GOLD JEWELRY
Comprising gold handkerchief holder, cigarette holder and two lockets. [Lot.]
(*Property of an Estate*)
- 15- 76. TWO GOLD-MOUNTED BROOCHES
One of shell cameo; the other with painted still life decoration. (*Property of an Estate*)
- 72- 77. LOT GOLD JEWELRY
Comprising five rings set with imitation stones, four lingerie clasps and a bapin. [Lot.] (*Property of an Estate*)
- 65- 78. GOLD CLIP
In the form of a dragon fly set with a single round diamond and three olivine
(*Property of an Estate*)
- 87- 79. GENTLEMAN'S GOLD AND PLATINUM WATCH CHAIN
Fine 'rope'-woven platinum and gold chain. Together with gold link chain
(*Property of an Estate*)
- 97- 80. TWO GOLD PENKNIVES
With engraved cases, one initialed. Together with gold-mounted amber cigarette holder in gold case. (*Property of an Estate*)
- 32- 81. LOT OF GOLD-MOUNTED SCARF PINS
Nine scarf pins set with topaz, turquoise, baroque pearl, etc. [Lot.] (*Property of an Estate*)
- 40- 82. FOUR GOLD CHAINS
One of red, blue and white enameled links; one with clasp set with small seed pearls; and two others. (*Burleigh*)
- 45- 83. DIAMOND AND AQUAMARINE BROOCH
Oval brooch with gold back and platinum top set with a square faceted sapphire and two small round diamonds. (*Burleigh*)
- 77- 84. LOT OF GOLD JEWELRY
Comprising gentleman's penknife, pencil holder, and collapsible pencil in case; all monogrammed. [Lot.] (*N. Y. Private Owner*)

5. TWO LADY'S GOLD WRIST WATCHES

One by Avia with fifteen jewel, three-adjustment movement; the other a Concord Swiss movement; black silk straps. (*Burleigh*)

20-

6. PEARL AND AMETHYST PENDANT ON CHAIN

Heart-shaped amethyst pendant with yellow gold mount on link chain set with four oval amethysts and four baroque pearls. (*Burleigh*)

105-

7. LOT OF GOLD ARTICLES

Comprising two pencils, pair of scissors in gold case, penknife, whistle and three enholders. Together with a gilded metal pomade box. [Lot.] (*Burleigh*)

60-

8. LOT OF GOLD JEWELRY

Comprising a gold and green enameled fob, and bangle bracelet set with nine seed pearls. Together with three pairs of gold earrings. [Lot.] (*Burleigh*)

195-

9. GOLD CHAIN

Long chain of oblong links. (*N. Y. Private Owner*)

30-

10. FOURTEEN GOLD AND ENAMELED STICK PINS

Comprising elephant head, fox-head, crystal, etc. (*Burleigh*)

10-

11. FIVE GOLD LOCKETS AND A VANITY

Watch-locket with daguerreotype; two circular lockets; vanity; locket with red and white enamel; and heart-shaped locket set with tiny diamond; some monogrammed. (*Burleigh*)

175-

12. THREE LADY'S WRIST WATCHES

Monogrammed. One by Tiffany & Co. in yellow gold case; one in silver case with two-adjustment, fifteen-jewel Sauter Frères movement; the other of four-carat white gold with Waltham fifteen-jewel movement. Two with black straps. Setting of one missing. (*Burleigh*)

325-

13. PEARL NECKLACE AND PAIR EARRINGS

The clasp of necklace set with tiny seed pearls; the earrings each set with two pearl drops. Together with two gold-mounted brooches set with seed pearls and baroque pearls. (*Burleigh*)

25-

14. LOT OF TEN PINS

Pair of bar pins, each set with a small sapphire; set of four small pins, each set with tiny sapphire; feather pin set with five small round diamonds; two bar pins with calibre-cut onyxes and three small pearls; and a circle brooch set with nine small baroque pearls, some stones missing; gold mounts. [Lot.] (*Burleigh*)

75-

95. LADY'S PENDANT WATCH WITH CHAIN

97-12 Longines seventeen-jewel, five-adjustment Swiss movement, made for Bl. Starr & Frost, eighteen-carat gold black enamel case, the back set with a circle of seed pearls; neck chain of alternating black enamel links and seed pearls. (*Burleigh*)

85-12 96. TWO LADY'S WATCHES

One in fourteen-carat gold case with four-adjustment, fifteen-jewel Geneva movement; the case set with six small sapphires and eight small round-cut diamonds; the other with pearl and black enamel eighteen-carat gold case, jewel movement by Tiffany & Co. (*Burleigh*)

85-12 97. PEARL AND AMETHYST FLORAL PIN

In yellow gold mount set with six amethysts and centred by a half-pearl in yellow gold mount. (*Burleigh*)

11 98. TWO IMITATION DIAMOND AND SAPPHIRE WHITE GOLD-MOUNTED NECKLACES

One with oval pendant set with twenty-four small round-cut diamonds; on chain. (*Burleigh*)

10 99. GOLD AND SEED PEARL LOCKET

Front centred with small old-mine diamond weighing approximately .05 carat surrounded by seed pearls; with monogrammed back; suspended from black ribbon with rose diamonds and seed pearls. (*Burleigh*)

92-15 100. GOLD AND ENAMELED PENDANT

Circular pendant with oval plaquette in enamel with figure of a young woman and suspended from pierced brooch pendant; of yellow gold and mounted with tiny rose diamonds. (*N. Y. Private Owner*)

135 101. GOLD-MOUNTED SHELL COME BROOCH

Oval cameo with bust portrait of a woman in gold frame. (*N. Y. Private Owner*)

10 102. LOT OF GOLD JEWELRY

Two watch chains, one with twelve small round pearls; and pair of enamel gold cuff buttons mounted with rose diamonds. Together with sterling silver 'good luck' charm. [Lot.] (*N. Y. Private Owner*)

10 103. GOLD-MOUNTED BLACK MOIRÉ SILK BAG

With fourteen-carat yellow gold frame. (*N. Y. Private Owner*)

42-12 104. PAIR FOURTEEN-CARAT GOLD EARRINGS

In green and yellow gold. (*N. Y. Private Owner*)

105. BLACK ENAMEL GOLD VANITY AND LIPSTICK HOLDER

Circular vanity, the top with platinum monogram set with rose diamonds; lipstick holder suspended on yellow gold short tiny link chain, and with ring holder. Together with enameled silver powder box fitted with mirror, and set of garnet jewelry comprising oval brooch and pair of earrings to match. (N. Y. Private Owner)

106. GARNITURE OF SILVER AND RED BEAD GRAPE CLUSTERS

Comprising brooch, three dress clips, and three pairs of earrings. Part of one earring missing. (Burleigh)

107. LOT OF JEWELRY

Comprising two carnelian necklaces with gold-filled clasps; amber necklace; amber, carved ivory and scarab necklace; tortoise-shell double-strand necklace. [Lot.] (Burleigh)

108. LOT OF GOLD

Comprising gold bead necklace; long gold chain set with sixteen tiny round pearls, broken; hat pin in the form of a sword; two gold tassel pendants; pair of gold earrings; small gold bead and seed pearl neck chain with gold cross pendant; and a gold-woven brooch with tassel pendant. Together with a small gold ring. [Lot.] (de Rose)

109. LOT OF JEWELRY

Comprising eleven blue bead necklaces, one set with platinum, rose diamond and sapphire clasp. [Lot.] (Burleigh)

110. LOT OF CARNELIAN JEWELRY

Comprising necklace sectionally divided by carved plaquettes and plain circles; and four pairs of circular earrings with gilded silver mounts. [Lot.] (Burleigh)

111. LOT OF JEWELRY

Comprising crescent-shaped carnelian brooch; pair of carnelian and filigree silver brooches; two pairs of carnelian earrings; carnelian bracelet with elephant figure at end; circular carnelian scarf pin; and blood stone bracelet set with six oval stones. [Lot.] (Burleigh)

112. LADY'S ENAMELED GOLD WATCH AND CHAIN

Eighteen-carat enameled gold case set with rose diamonds and fitted with eighteen-jewel, seven adjustment movement by Koehn for Black, Starr & Frost; enameled link chain. (N. Y. Private Owner)

- 105- 113. FOUR GOLD COLLAR CLIPS
Set with star sapphire, cabochon emerald, synthetic ruby, etc. (*Mackenzie*)
- 37- 114. AMETHYST AND GILDED SILVER NECKLACE
With thirty-four oval faceted amethysts. (*Property of an Estate*)
- 97- 115. TWO CORAL-MOUNTED GOLD PINS
One crescent-shaped set with half pearls, one missing; the other with riding crop and horseshoe. (*Property of an Estate*)
- 30- 116. GOLD-MOUNTED TOPAZ PENDANT
Floral carved pendant of yellow gold mounted with pear-shaped topaz and gold link chain. (*Property of an Estate*)
- 37- 117. TWO SILVER CIGARETTE CASES
Both with monogram. Together with pinchbeck and carnelian-mounted for Italian gold locket and tiny gold thimble. (*Property of an Estate*)
- 70- 118. LOT OF GOLD JEWELRY
Comprising pair of cuff links and two scarf pins, each with green jade plaque [Lot.] (*Property of an Estate*)
- 40- 119. FOUR GOLD CHAINS
Together with a gold link fob, one link broken. (*Property of an Estate*)
- 50- 120. LOT OF JEWELRY
Comprising long chain set with imitation amethyst beads; bracelet of five plaques, each set with a blue stone; and gold and silver bracelet of five oblong plaques. [Lot.] (*Property of an Estate*)
- 47- 121. LOT OF JEWELRY
Comprising enameled silver 'chatelaine' brooch; gilt metal mandarin buckle mounted with two green jade plaques; comb with four scarabs, one missing; imitation aquamarine and silver brooch; three metal clips; plated Latin cross brooch in the form of a rickshaw; two gilt metal pins connected by chain, one with pear-shaped pendant. [Lot.] (*Property of an Estate*)
- 50- 122. THREE SCARF PINS
One with onyx ball set with single round diamond; one with agate; the other 'automobile' ornament of platinum and gold mounted with six rose diamonds. (*Property of an Estate*)
- 30- 123. SIX SCARF PINS
All with gold mounts and set with scarab, abalone pearl, etc. (*Property of an Estate*)

24. GENTLEMAN'S HUNTING CASE GOLD WATCH
engraved case with movement by E. Howard & Co. of Boston. (*Property of an Estate*)
25. ENGRAVED GOLD RING
mounted with three charms set with bloodstone and intaglio-cut crystal. (*West*)
26. PAIR ORIENTAL PEARL STUDS
each pearl weighing approximately 3.50 grains; gold backs. (*Property of an Estate*)
27. PLATINUM-MOUNTED IMITATION EMERALD AND DIAMOND RING
oblong faceted imitation emerald in platinum mount set with four round-cut diamonds having a total weight of approximately .40 carat. (*Property of an Estate*)
28. DIAMOND-MOUNTED AND IMITATION RUBY RING
oval faceted imitation ruby; the yellow gold mount set at the shank with six small round-cut diamonds. (*Property of an Estate*)
29. GOLD COMPACT
oblong engine-turned case; chain broken. (*Property of an Estate*)
30. FOUR BRACELETS
one of black enamel; one mounted with a scarab and set with rose diamonds; one of garnets; the other with three oval faceted amethysts. (*Property of an Estate*)
31. LOT OF TWENTY-THREE GOLD-MOUNTED PINS
set with onyx centred with seed pearls. Together with two pearl and onyx gold-mounted stick pins. [Lot.] (*Burleigh*)
32. LOT OF JEWELRY
comprising imitation pearl and onyx necklace; small colored bead necklace with two sea-shell drops; blue glass and filigree silver necklace; amethyst silver bracelet; amethyst and silver necklace mounted with seven stones; pair of amethyst buckles; and pair of amethyst drop earrings. [Lot.] (*Burleigh*)
33. LOT OF GOLD-MOUNTED AND SEED PEARL JEWELRY
comprising six crown-, oval- and square-shaped brooches. Together with six gold and pearl pins. [Lot.] (*Burleigh*)
34. LOT OF RHINESTONE JEWELRY
comprising five-strand brooch set with approximately 45 stones; necklace of sixteen clusters; necklace with shield-shaped pendant. Together with gilded necklace with approximately one hundred small imitation diamonds. [Lot.] (*Burleigh*)

37.00

25-

25-

57.00

85-

45-

65-

77.00

32.00

125-

12.00

40- 135. LOT OF GOLD-FILLED JEWELRY

Comprising three necklaces, one with double strand. [Lot.] (*Burleigh*)

90- 136. DIAMOND AND PEARL PENDANT

Pearl drop suspended from platinum links containing ten small round diamonds set in bezels and with one small and one large pearl. Together with two platinum clasps, each set with a small round diamond, mounted on black moiré ribbon; a marcasite-mounted lorgnette; floral pin set with eight imitation diamonds; and a single pearl-mounted ring. (*Property of an Estate*)

90- 137. PLATINUM CHAIN WITH ORIENTAL PEARL AND DIAMOND PENDANTS
Fine link chain set with three small round-cut diamonds and two Oriental pearls, each pearl weighing approximately 8.50 grains. (*de Rose*)

55- 138. PAIR DIAMOND AND ONYX EARRINGS

Each earring set with four square and three oblong onyxes and four round and thirty-four rose diamonds; platinum mounts. (*N. Y. Private Owner*)

100- 139. GOLD-MOUNTED CIRCULAR MINIATURE BROOCH

Bust of a woman with profile to the right; outer frame set with thirty-one round diamonds, one missing. (*Burleigh*)

110- 140. PLATINUM AND DIAMOND GUARD RING

Set with approximately forty small diamonds weighing approximately .40 carats; Tiffany & Co. (*Burleigh*)

70- 141. TWO GOLD-MOUNTED CIRCULAR BROOCHES

One set with twelve small round faceted sapphires, some stones missing; the other with scalloped outer rim divided by seed pearls and rose diamonds, one pearl missing. (*Burleigh*)

145- 142. TWO PAIR IMITATION PEARL AND DIAMOND EARRINGS

Two pairs of gold earrings, each set with an imitation pearl and a single diamond weighing approximately .10 carat. Together with a baroque pearl pendant suspended from a gold and platinum pin set with small round diamonds. (*Burleigh*)

35- 143. SET OF GARNET AND SEED PEARL JEWELRY

Comprising necklace, brooch and pair of earrings in floral design set with garnets and tiny seed pearls; gilded silver mount. (*Burleigh*)

67- 144. FIVE GOLD RINGS

One set with three small pearls and tiny diamonds; another with turquoise and seed pearls; a pair each set with three turquoises and four small diamonds; and another. (*Burleigh*)

45. LOT OF JEWELRY

Comprising gold link chain set with pear-shaped imitation pearls and imitation emeralds; a green glass pear-shaped drop mounted in gold and set with rose diamonds; small enameled gold brooch in form of four-leaf clover and set with single small old-mine diamond; and sapphire and seed pearl baby pin with yellow gold mount. [Lot.] (*Burleigh*)

45-

46. SAPPHIRE AND ROSE DIAMOND-MOUNTED PLATINUM AND GOLD BRACELET

Set with five oval faceted sapphires separated by pierced gold links mounted with rose diamonds. (*Burleigh*)

155-

47. TWO PLATINUM AND GOLD DIAMOND BROOCHES

One set with nine small diamonds, total weight approximately .40 carat; the other set with three diamonds interspersed with carved colored semi-precious stones. (*Burleigh*)

920

48. PLATINUM- AND GOLD-MOUNTED OVAL BROOCH

Outer rim with filigree platinum sectionally divided by eight diamonds weighing approximately .60 carat. (*Burleigh*)

100-

49. GOLD-MOUNTED PETIT POINT BAG

Fourteen carat engraved yellow gold mount; by M. Gattel & Co.; catch with small sapphires. (*N. Y. Private Owner*)

45-

50. GOLD FLORAL BROOCH

Mounted with olivines and nine small round pearls and centred by a single round-cut diamond, weighing approximately .20 carat. Together with a large turquoise and a small baroque pearl. (*California Private Owner*)

130-

51. DIAMOND BROOCH

Set with five old-mine and approximately fifty-seven rose diamonds. (*California Private Owner*)

150-

52. SIX GOLD-MOUNTED SCARF PINS

Mounted with turquoise and diamond, enameled gold head surrounded by rose diamonds, garnet, jade and pearl. [Lot.] (*California Private Owner*)

65-

53. PEARL AND DIAMOND STICK PIN

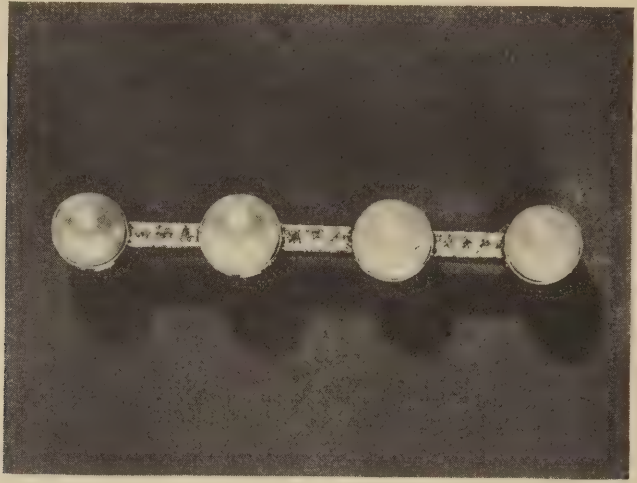
Set with four diamonds weighing approximately .10 carat centred with single pearl. (*California Private Owner*)

30-

54. DIAMOND-MOUNTED PLATINUM RING MOUNT

Platinum mount set with approximately twenty-three small round-cut diamonds. (*California Private Owner*)

120-



[NUMBER 155] *Slightly Enlarged*

135 155. PEARL AND DIAMOND BROOCH

In platinum mount and set with four half-pearls and nine small round-cut diamonds. (*Bruce*)

[See illustration]

85 156. GENTLEMAN'S OPEN-FACE POCKET WATCH

Twenty-one jewel, five-adjustment movement by Longines Watch Co., platinum case. The back with monogram *A. M., Jr.* (*Mackenzie*)

180 157. EMERALD-MOUNTED DRESS SET

Comprising pair of platinum cuff links each set with a small cabochon emerald and three shirt studs with cabochon emeralds. (*Mackenzie*)

155 158. ROSE DIAMOND-MOUNTED ENAMEL PENDANT WITH GARNET CHAIN

Circular locket pendant with enamel figure decoration against a black ground and surrounded with an outer border of rose diamonds suspended from garnet bead chain. Together with oval locket engraved with 'Bohemian' flower design. (*Property of an Estate*)

270 159. BAROQUE PEARL AND DIAMOND PENDANT

In platinum mount set with three small round-cut diamonds and Oriental pearl. (*N. Y. Private Owner*)

60. GOLD MESH BAG
Fourteen-carat gold mesh bag with scrolled handle and link chain; weight approximately 108 pwt. (*Property of an Estate*) 107⁵⁰
61. BLACK AND WHITE PEARL RING
Half pearls in engraved yellow gold mount set with approximately eight small rose diamonds. (*Property of an Estate*) 80-
62. GENTLEMAN'S POCKET WATCH
Eighteen-carat gold case, fitted with jewel and chiming movement. (*Property of an Estate*) 75-
63. LOT OF CUFF BUTTONS
Comprising pair mounted with lapis, pair of agate ball buttons, pair of moss agate, pair of striped agate, pair of garnet; some with gold mounts. Together with two garnet shirt studs. [Lot.] (*Property of an Estate*) 45-
64. LOT OF GOLD AND GOLD-PLATED JEWELRY
Comprising Latin cross with inscription 'Excellence'; medal; chain mounted with ten oval blue stones; plated watch chain; floral brooch, stone missing; enamel bird brooch; scarab; brooch in form of Egyptian head; and floral spray. Together with long woven chain with gold-filled lorgnette. (*Property of an Estate*) 100-
65. FOUR GOLD RINGS
Two mounted with scarabs, one with topaz, one with green stone, all in carved gold mounts. Together with an imitation diamond in white metal mount. (*Property of an Estate*) 85-
66. SAPPHIRE-MOUNTED ENAMEL GOLD DRESS SET
Comprising pair of cuff links, three vest buttons, and three dress studs, each set at centre with tiny cabochon sapphire on mother-of-pearl, enameled gold outer border. (*Property of an Estate*) 35-
67. DIAMOND AND PLATINUM-MOUNTED POCKET KNIFE
Set with a single diamond weighing approximately .60 carat. (*Mackenzie*) 140-
68. DIAMOND-MOUNTED PLATINUM WATCH CHAIN
Pierced oblong links, and set with five small round diamonds having a total weight of approximately 1 carat. (*Mackenzie*) 145-

169. PLATINUM-MOUNTED SAPPHIRE AND DIAMOND HORSESHOE-SHAPED BROOCH

100

Set with twenty-six sapphires and six diamonds weighing approximately carat; by Black, Starr & Frost. (*Burleigh*)

170. GOLD AND PLATINUM WOVEN MESH BAG

170

The clasp set with two cabochon sapphires. (*Property of an Estate*)

171. PAIR BAROQUE PEARL AND DIAMOND EARRINGS

40

Each set with single baroque pearl mounted over single diamond weighing approximately .05 carat; gold mount. (*Property of an Estate*)

172. ROSE DIAMOND- AND PEARL-MOUNTED BRACELET

50

Set with five peridots, each separated by a leaf cluster centred by a tiny sea pearl and rose diamonds; platinum mount with gold back. (*Property of an Estate*)

173. DIAMOND AND PEARL BRACELET

160

Small bracelet centred by a platinum plaque mounted with twenty-five small round-cut diamonds. (*Property of an Estate*)

174. DIAMOND AND PEARL SCARF PIN

90

Platinum mount set with one half-round pearl and ten small round-cut diamonds; yellow gold pin. (*Property of an Estate*)

175. LOT OF CORAL

475

Comprising two coral bead necklaces; pear-shaped coral pendant with white gold cap mounted with rose diamonds and on platinum link chain; two coral mounted ear screws; pair of coral earrings with pear-shaped drops; coral stick pin; and pair of gilded metal cuff links mounted with button-shaped coral. Together with a veil pin. [Lot.] (*Property of an Estate*)

176. DIAMOND AND CORAL RING

80

Button-shaped pink coral in platinum mount set with approximately seventeen small round diamonds, one diamond missing. (*Property of an Estate*)

177. DIAMOND-MOUNTED PLATINUM BAR PIN

250

Set with thirteen small round-cut diamonds having total weight of approximately 1 carat. (*de Rose*)

78. GOLD-MOUNTED DIAMOND AND SAPPHIRE FRAME BROOCH
Outer frame set with approximately twenty rose diamonds and twenty small sapphires, centred with portrait of a woman, profile to the left. (*Burleigh*)

155-

79. LOT OF PLATINUM- AND GOLD-MOUNTED BROOCHES
Comprising oblong coral, crystal and rose diamond brooch; circular green enamel, pearl and rose diamond floral brooch; green enamel four-leaf clover centred with small diamond; small pin set with two four-leaf clovers each centred with a rose diamond. [Lot.] (*Burleigh*)

180-

80. GOLD-MOUNTED AND MOSAIC PLAQUES
Intertwined initials *PX* in green, red and white mosaic with yellow gold back. (*N. Y. Private Owner*)

30-

81. DIAMOND AND PLATINUM WRIST WATCH
Oval watch with seventeen-jewel, three-adjustment movement by T. Lafond; platinum case and flexible band set with approximately sixty-five small round diamonds and six baguettes. (*Burleigh*)

315-

82. AMETHYST-MOUNTED GOLD CHAIN WITH CROSS
Latin cross of yellow gold set with eleven round faceted amethysts; long gold link chain mounted with twenty-eight faceted round amethysts set in bezels. (*Burleigh*)

125-

183. PLATINUM- AND GOLD-MOUNTED DIAMOND MONOGRAMMED BROOCH
Set with approximately sixty-five small diamonds, outer rim with leaf decoration; total weight approximately 2 carats. (*Burleigh*)

210-

184. SEVEN ENAMELED GOLD FLORAL BROOCHES
Four with a single old-mine diamond, one with eight small seed pearls and one old-mine diamond, the other two of plain black enamel. (*Burleigh*)

750-

185. SAPPHIRE AND DIAMOND CIRCLE BROOCH
Platinum and gold mount set with four small round-cut diamonds having a total weight of approximately .80 carat and four cabochon sapphires. (*Burleigh*)

105-

186. GENTLEMAN'S OPEN-FACE POCKET WATCH
Platinum case with eighteen-jewel, five-adjustment movement by Vacheron & Constantin. (*Mackenzie*)

140-

187. LOT OF CORAL JEWELRY

150

Comprising necklace of three strands from which depend grotesque figure brooch in form of mermaid; two pairs of earrings, one inset with seed pearl [Lot.] (*Burleigh*)

188. THREE-STONE DIAMOND GOLD-MOUNTED SOLITAIRE RING

460

Set with three old-mine diamonds weighing approximately 2.25 carats; set with eight small diamonds. (*Burleigh*)

189. DIAMOND-MOUNTED VELVET COLLARETTE

145

Oblong pierced platinum plaque set with approximately twenty-five small round-cut diamonds mounted on black velvet band, the platinum clasp set with three small round-cut diamonds. (*Property of an Estate*)

190. GOLD-MOUNTED PEARL AND DIAMOND BUTTERFLY BROOCH

220

Set with four diamonds weighing approximately .70 carat and two pearls centred with butterfly set with rose diamonds; by Tiffany & Co. (*Burleigh*)

191. DIAMOND GUARD RING

190

Platinum ring mounted with approximately twenty-five small round-cut diamonds. Total weight approximately 1.50 carat. (*Property of an Estate*)

192. GOLD-MOUNTED AND PEARL FLEUR DE LIS PIN WITH PENDANT WATCH

290

Pin centred with three rose diamonds from which is suspended small circular seed pearl- and rose diamond-mounted watch. (*Burleigh*)

193. DIAMOND BROOCH

165

Oblong brooch set with two large and approximately twenty-four small round-cut diamonds; platinum mount with gold pin. (*Burleigh*)

194. GOLD MESH BAG

155

Mesh bag weighing approximately 160 pwts; the engraved gold clasp set with an oval cabochon sapphire. (*Property of an Estate*)

195. PAIR GOLD, PLATINUM AND DIAMOND BOWKNOT BROOCHES

105

Each set with seven diamonds weighing approximately .40 carat. (*Burleigh*)

196. PLATINUM AND DIAMOND LORGNETTE

245

Set with approximately 72 diamonds weighing approximately 1.25 carats (*Burleigh*)

97. GOLD-MOUNTED DIAMOND AND PEARL SOLITAIRE RING
Set with two old-mine diamonds weighing approximately 1.50 carats, and centred with pearl. (*Burleigh*)

570-

98. GOLD NUGGET
Oblong nugget weighing approximately 160 pwts. (*Property of an Estate*)

240-

99. LAPIS LAZULI-MOUNTED GOLD BOX
Oblong box with hinged cover, the top and bottom inset with oval plaque of lapis; inside of cover with inscription. (*Property of an Estate*)

970-

100. DIAMOND AND ONYX DINNER RING
Set at centre with a single diamond weighing approximately .60 carat and with about twenty-four small round diamonds and twenty-four tiny onyxes; platinum mount. (*N. Y. Private Owner*)

260-

101. SEED PEARL NECKLACE, EARRINGS AND BROOCH
Necklace of seed pearls with floral design, oval brooch, and pair of pendant earrings to match; gold mounts. (*California Private Owner*)

590-

102. THREE SAPPHIRE-MOUNTED BROOCHES
With platinum and gold mounts. One with small round-cut sapphire and seven small pearls (one missing), total weight of pearls approximately 1.68 grains; one with square faceted sapphire and two small round-cut diamonds; and another with nine round sapphires and six small round-cut diamonds. (*Burleigh*)

85-

103. DIAMOND AND SAPPHIRE CLUSTER RING
Centred with faceted sapphire, outer rim set with eight old-mine diamonds weighing approximately 1.10 carats. (*Burleigh*)

210-

104. THREE-STONE DIAMOND RING
Three old-mine diamonds, total weight approximately 1.75 carats; in yellow gold mount. (*Burleigh*)

685-

105. SEVEN GOLD-MOUNTED SCARF PINS
Mounted with sapphires, diamonds, star sapphire, etc. Together with two imitation pearl veil pins. (*N. Y. Private Owner*)

180-

106. SAPPHIRE AND DIAMOND RING
The pierced platinum mount set with three small round-cut diamonds having an approximate weight of 1.50 carats and centred by a pale cabochon sapphire. (*N. Y. Private Owner*)

110-



[NUMBER 207]

210- 207. DIAMOND AND PEARL DINNER RING

Set with two pearls and approximately thirty-six old-mine-cut diamonds in yellow low gold mount with platinum top. (*California Private Owner*)

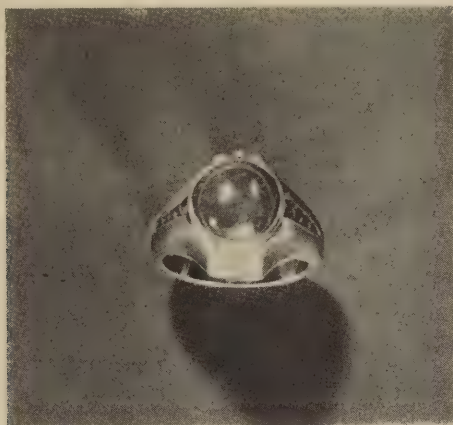
[See illustration]

160- 208. DIAMOND AND GARNET BROOCH

Set with five small round-cut diamonds having a total weight of approximately 1 carat; and six round faceted garnets; yellow gold mount. (*Property of a Estate*)

190- 209. GOLD-MOUNTED DIAMOND AND SAPPHIRE CLUSTER RING

With approximately twenty-seven small diamonds weighing approximately 1.2 carats centred with three sapphires. (*Burleigh*)



[NUMBER 210]

10. CABOCHON RUBY RING

Circular cabochon ruby, white gold mount, shank set with eight small sapphires and six small diamonds. (*Mackenzie*)

[See illustration]

200-

11. DIAMOND-MOUNTED BROOCH

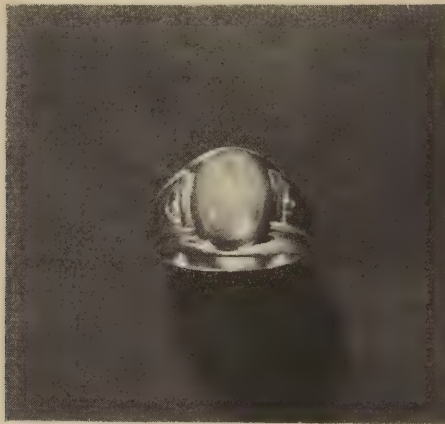
Rescnet shape, in gold mount with platinum top, set with approximately twenty-three old-mine diamonds. (*Burleigh*)

675-

12. PLATINUM- AND GOLD-MOUNTED ENTWINED HEART BROOCH

Set with forty small old-mine diamonds weighing approximately 1.10 carats. (*Burleigh*)

295-



[NUMBER 213]

400 213. STAR SAPPHIRE RING

Oval star sapphire in eighteen-carat white gold mount, shank set with two moon diamonds. (*Mackenzie*)

[See illustration]

850 214. DIAMOND, PLATINUM AND GOLD CLUSTER RING

Centred with single stone weighing approximately 2 carats, outer rim with twelve old-mine diamonds approximate weight 1 carat. (*Burlcigh*)

165 215. RUBY AND DIAMOND-MOUNTED PLATINUM BROOCH

Set with ten small round rubies and approximately ten small round-cut diamonds. (*Property of an Estate*)

315 216. DIAMOND-MOUNTED PLATINUM GUARD RING

Platinum ring mounted with approximately twenty-two small round-cut diamonds having a total weight of about 1.75 carats. (*Property of an Estate*)

200 217. DIAMOND AND CORAL RING

Platinum mount set at centre with a single pink coral and surrounded by approximately thirty-two small round-cut diamonds (*Property of an Estate*)



[NUMBER 218]

28. PEARL- AND DIAMOND-MOUNTED BROOCH

Floral-shaped brooch mounted with seven matched pearls and approximately sixty small round-cut diamonds. (*California Private Owner*)

400-

[See illustration]

29. RUBY RING

Oval faceted ruby weighing approximately 3 carats; platinum mount. (*N. Y. Private Owner*)

670-

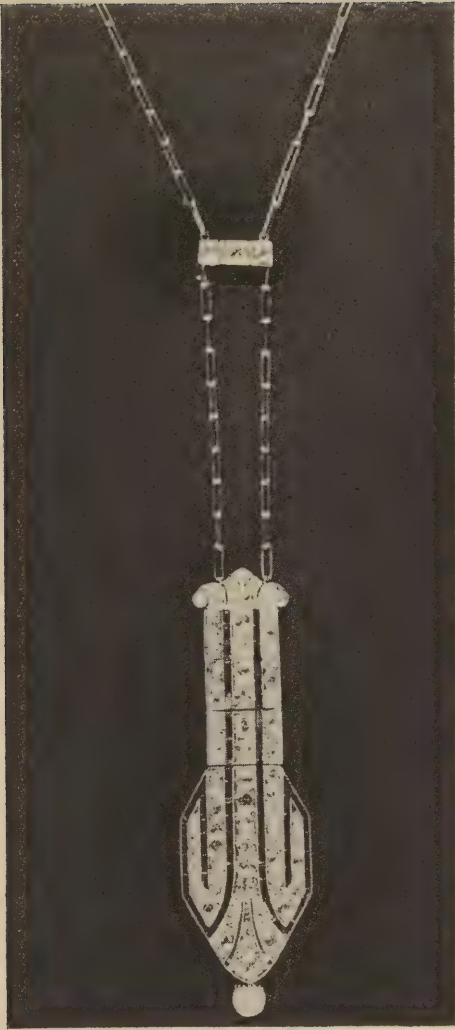
220. DIAMOND, SAPPHIRE AND PLATINUM PENDANT WATCH

370- Oval platinum case with jewel movement, the stem with a tiny pearl; mounted with approximately fifty-six calibre-cut sapphires and approximately eighty-two round-cut diamonds. With platinum link chain set with single mounted with three small round-cut diamonds. By E. Gubelin, Lucerne. (California Private Owner)

[See illustration]

135- 221. STAR SAPPHIRE PENDANT

Pendant set with one round and two oval star sapphires; the mount with small imitation pearls, some missing; on seed pearl necklace with pierced gold clasp. (N. Y. Private Owner)



[NUMBER 220]

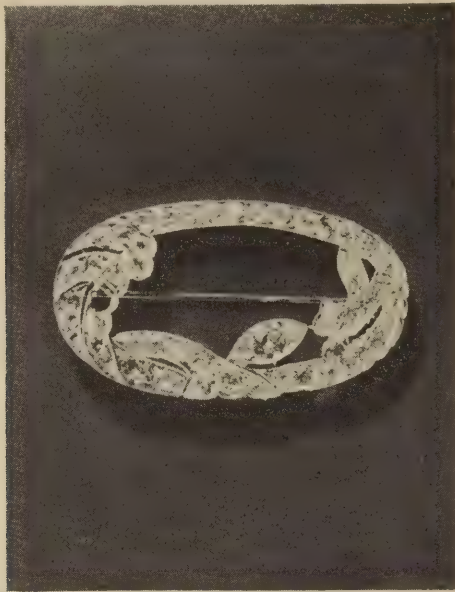
222. SAPPHIRE AND DIAMOND BRACELET

440 Flexible platinum mount set with twenty square-faceted sapphires and twenty round diamonds. Total weight of diamonds about 2 carats. (*Property of the Estate*)

[See illustration]



[NUMBER 222]



[NUMBER 223]

223. DIAMOND-MOUNTED PLATINUM BROOCH

375 Oval brooch set with seven small calibre-cut emeralds and approximately four round-cut diamonds having a total weight of about 3 carats; one diamond missing. (*Property of an Estate*)

[See illustration]

224. PLATINUM AND DIAMOND STRAIGHT-LINE BRACELET

2-050 Set with approximately thirty-five matched diamonds weighing approximately 10 carats. (*Burleigh*)

[See illustration]



[NUMBER 224]



[NUMBER 225]

225. SAPPHIRE, RUBY, DIAMOND AND OPAL BUTTERFLY BROOCH

700- Yellow gold mount set with a single sapphire, one oval fiery opal, twenty-five small rubies and approximately sixty-three old-mine cut diamonds. (*Burleigh*)

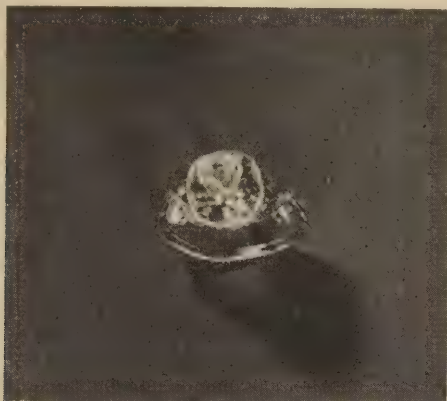
[See illustration]

226. PAIR GOLD-MOUNTED DIAMOND EARRINGS

560- Each set with two round diamonds weighing approximately .90 carat and .70 carat, respectively. (*Property of an Estate*)

227. DIAMOND AND SAPPHIRE GOLD-MOUNTED RING

650- Set with two old-mine diamonds; total weight approximately 1.50 carats centred with sapphire. (*Burleigh*)



[NUMBER 228]

28. OLD-MINE SOLITAIRE DIAMOND RING

Diamond weighing approximately 3 carats; platinum mount with small round diamonds. (*Property of an Estate*)

1,250-

[See illustration]

29. DIAMOND AND IMITATION EMERALD BOWKNOT

Platinum mount set at centre with an oblong faceted imitation emerald and with approximately one hundred forty-six round and rose diamonds. (*Property of an Estate*)

720-

30. LOT OF GOLD AND BAROQUE PEARL NECKLACES

Comprising necklace with approximately fifty baroque pearls from which is suspended a cross; baroque and gold necklace; baroque and pearl necklace with gold heart; and a baroque and gold chain. [Lot.] (*Burleigh*)

100-

235
231. DIAMOND-MOUNTED BAR PIN
Set with sixteen diamonds, total weight approximately 1.75 carats. (*California Private Owner*)

230
232. PLATINUM AND GOLD MESH BAG
Of finely woven alternating platinum and gold links; the clasp set with two cabochon sapphires; gold link chain. (*Property of an Estate*)

210
233. DIAMOND AND PEARL CLUSTER RING
Centred with three pearls, outer rim set with fourteen old-mine diamonds weighing approximately 2.50 carats. (*Burleigh*)

730
234. DIAMOND-MOUNTED PLATINUM BROOCH
Oval brooch set with approximately one hundred thirteen round diamonds; centre diamond weighing approximately 1.50 carats. Total weight of diamonds about 3.75 carats. (*Burleigh*)

140
235. DIAMOND RING
Platinum mount set with two large round and approximately twenty small round diamonds, having a total weight of approximately 1 carat. (*Private Owner*)

560
236. DIAMOND BROOCH
Square brooch mounted with approximately seventy-one old-mine cut diamonds (*California Private Owner*)

[END OF FIRST SESSION]

30.549.⁵⁰

CONDITIONS OF SALE

property listed in this catalogue will be offered and sold subject to the following terms and conditions:

The word "Galleries", wherever used in these Conditions of Sale, means the Deane-Bernet Galleries, Inc.

The Galleries has exercised reasonable care to catalogue and describe correctly the property to be sold, but it does not warrant the correctness of description, genuineness, authenticity or condition of said property.

Unless otherwise announced by the auctioneer at the time of sale, all bids are for a single article even though more than one article is included under a numbered item in the catalogue. If, however, the articles under any one numbered item are designated as a "Lot" then bids are to be for the lot irrespective of the number of articles described in such item.

The highest bidder accepted by the auctioneer shall be the buyer. In the event of any dispute between bidders, the auctioneer may, in his discretion, determine who is the successful bidder, and his decision shall be final; or the auctioneer may refuse to sell and resell the article in dispute.

Any bid which is not commensurate with the value of the article offered, or which is merely a nominal or fractional advance over the previous bid, may be rejected by the auctioneer, in his discretion, if in his judgment such bid would tend to affect the sale injuriously.

The name and address of the buyer of each article, or lot, shall be given to the Galleries immediately following the sale thereof, and payment of the whole purchase price, or such part thereof as the Galleries may require, shall be immediately made by the purchaser thereof. If the foregoing condition, or any other condition hereinafter set forth, is not complied with, the sale may, at the option of the Galleries, be cancelled, and the article, or lot, reoffered for sale.

Unless the sale is advertised and announced as an unrestricted sale, or a sale without reserve, consignors reserve the right to bid.

Except as herein otherwise provided, title will pass to the highest bidder upon the fall of the auctioneer's hammer, and thereafter the property is at the purchaser's sole risk and responsibility.

Articles sold and not paid for in full and not taken by noon of the day following the sale may be turned over by the Galleries to a carrier to be delivered to a warehouse for the account and risk of the purchaser, and at his cost. If the purchase price has not been so paid in full, the Galleries may either cancel the sale, or any partial payment already made shall thereupon be forfeited as liquidated damages, or it may resell the same, without notice to the buyer and for his account and risk, and hold him responsible for any deficiency.

10. If for any cause whatsoever any article sold cannot be delivered, or cannot be delivered in as good condition as the same may have been at the time of sale, the sale will be cancelled, and any amount that may have been paid on account of the sale will be returned to the purchaser.

11. Unless purchased for resale, the buyer will be required to pay the Federal Excise Tax equivalent to 10 per centum of the price for which sold on jewelry, clocks, silver, gold, furs, etc. However, articles of these categories sold for certain classes of consignors are exempt from this tax. Items in this catalogue subject to the Federal Excise Tax are designated by an asterisk (*).

12. Unless exempt from the payment thereof, the buyer will also be required to pay the New York City sales tax of 1 per centum of the price for which the articles are sold.

13. The Galleries, subject to these Conditions of Sale and to such terms and conditions as it may prescribe, but without charge for its services, will undertake to make bids for responsible parties approved by it. Requests for such bids must be given with such clearness as to leave no room for misunderstanding. The amount to be bid and must state the catalogue number of the item and the name or title of the article to be bid on. If bids are to be made on several articles listed as one item in the catalogue, the request should state the amount to be bid on each article, unless the item contains the notation "Lot", in which case the request should state the amount to be bid "For the Lot". The Galleries reserve the right to decline to undertake to make such bids.

14. The Galleries will facilitate the employment of carriers and packers for the purchasers but will not be responsible for the acts of such carriers or packers in any respect whatsoever.

15. These Conditions of Sale cannot be altered except in writing by the Galleries or by public announcement by the auctioneer at the time of sale.

SALES CONDUCTED BY

HIRAM H. PARKE • OTTO BERNET • HARRY E. RUSSELL, JR. • LOUIS J. MARI

PARKE-BERNET GALLERIES • INC

30 EAST 57 STREET • NEW YORK

Telephone PLAZA 3-7573

Cable PA

HIRAM H. PARKE • *President*

OTTO BERNET • ARTHUR SWANN • LESLIE A. HYAM • *Vice-President*

EDWARD W. KEYES • *Secretary and Treasurer*

SECOND AND LAST SESSION

Thursday, November 18, 1943, at 2 p. m.

CATALOGUE NUMBERS 237 TO 386 INCLUSIVE

PLATINA FOX, CHINCHILLA, ERMINE AND OTHER FURS

27. TWO SINGLE-SKIN SCARVES
One of squirrel; the other of sable with mask, paws and tails. (N. Y. Private Owner) 170
28. LOT OF FUR
Including strip of raccoon, beaver, ermine, etc. Together with a plush robe; and a moleskin coat, worn. [Lot.] (N. Y. Private Owner) 350
29. WHITE FOX SCARF
Single scarf of white fox trimmed with mask, tail and paws. (Property of an Estate) 220
30. TWO FUR-TRIMMED VELVET WRAPS
One of black silk velvet trimmed with Russian ermine collar; the other of rainbow silk trimmed with chinchilla collar. (N. Y. Private Owner) 620
31. SABLE SCARF
Two matched sable skins trimmed with mask, tails and paws. (N. Y. Private Owner) 500
32. SQUIRREL CAPE
Sport cape of gray squirrel; gray silk lining. (N. Y. Private Owner)
Length 14 inches 330
33. RUSSIAN ERMINE-TRIMMED IVORY SILK VELVET EVENING WRAP
Collars and cuffs of Russian ermine, trimmed with tails. Together with untrimmed collar. (Property of an Estate)
Length 42½ inches 400
34. BLUE FOX SCARF
Two-skin scarf of blue fox trimmed with masks, tails and paws. (N. Y. Private Owner) 170
35. THREE-SKIN SCARF OF SABLE-DYED BAUM MARTEN
(N. Y. Private Owner) 800



[NUMBER 246]

246. BROADTAIL COAT

Short coat with narrow collar of dark gray and black broadtail; gray silk lining
Length 27 in

100 (Property of an Estate)

[See illustration]

4 SILVER FOX SCARF
 pointed silver fox pelt trimmed with mask, tail and paws. (N. Y. Private Owner) 90-

RUSSIAN ERMINE SHORT COAT
 trimmed with tails; white silk lining. (Property of an Estate) 95-
 Length 20 inches

4 A. BLACK BROADTAIL COAT
 black silk lining. (Silverman) 110-
 Length 50½ inches

4 SABLE SHORT CAPE
 brown silk lining. (Property of an Estate) 55-
 Length 19 inches

5 RUSSIAN ERMINE COAT
 trimmed with Russian ermine skins with short collar and lappets; gray silk lining. (N. Y. Private Owner) 150-
 Length 40½ inches

6 SQUIRREL COAT
 unmatched squirrel skins and shawl collar; gray silk lining. (N. Y. Private Owner) 200-
 Length 38 inches

RUSSIAN ERMINE CAPE WITH CHINCHILLA COLLAR
 trimmed with ermine skins with shawl collar of Bolivian chinchilla; chiffon velvet lining. (Property of an Estate) 130-
 Length 41 inches

GENTLEMAN'S FUR-LINED COAT
 black gray cloth coat with mink lining and large otter shawl collar and facing. (Silverman) 80-



[NUMBER 254]

254. RUSSIAN ERMINE COAT

Short coat with narrow collar of fine matched Russian ermine skins; white lining. In perfect condition. (*Hood*) *Size 14; length 34 in.*

420-

[See illustration]



[NUMBER 255]

PLATINA FOX SCARF

Two matched Norwegian platina fox skins trimmed with mask, paws and
(N. Y. Private Owner)

450-

[See illustration]



[NUMBER 256]

256. CHINCHILLA COAT

Coat of fine matched Bolivian skins; wide shawl collar; grey brocade
(N. Y. Private Owner) Length 40½

[See illustration]

CHINCHILLA CAPE

of fine matched Bolivian chinchilla skins and with shawl collar; gray silk
the hem with cut figured velvet. (*Hooper*)

300-

BLACK BROADTAIL COAT

silver fox collar; black silk lining. (*N. Y. Private Owner*)

Length 42 inches

220-

DIAMOND AND OTHER JEWELRY

BEAD PEARL AND GOLD-MOUNTED TORTOISE-SHELL COMB
(*Rogers*)

15-

INTAGLIO-CUT CARNELIAN AND GOLD RING

teen-carat yellow gold ring with intaglio-cut carnelian. (*Rogers*)

40-

LOT OF CULTURED AND OTHER PEARLS

holding a part string of Japanese cultured pearls, two portions of a bead
net, and two pieces of a small pearl chain. [*Lot.*] (*Rogers*)

115-

PAIR CRYSTAL AND GOLD CUFF BUTTONS

teen-carat yellow gold mounts set with crystals decorated with sporting
motifs. (*N. Y. Private Owner*)

35-

TWO PLATINUM CHAINS

one of pierced oval links; the other of tiny round links. Together with a
piece of seed pearls. (*N. Y. Private Owner*)

30-

LOT OF OBJECTS

including moss green jade spectacle case, enameled metal cigarette case, gold-
filled blue enamel pencil, and two gold-filled pencils. Together with pair
of imitation pearl earrings, and nickel-plated watch. [*Lot.*] (*Rogers*)

50-

TWO NECKLACES

one of coral containing approximately three hundred fifteen round beads; the
other of jet containing about two hundred fifteen beads. Together with a part
of green beads and pair of jet earrings. (*Rogers*)

15-

GOLD SPECTACLE CASE

with cover with monogram within an oval medallion. (*Rogers*)

80-

LADY'S BLACK ENAMEL AND GOLD PENDANT WATCH

black-faced watch fitted with jewel movement and an eighteen-carat black
enamel gold case; by Tiffany & Co. (*Rogers*)

60-

268. GENTLEMAN'S OPEN-FACE GOLD POCKET WATCH

60- Eighteen-carat gold case fitted with jewel movement; by Tiffany & Co. (Rogers)

269. TWO TURQUOISE NECKLACES

60- One of forty-seven oval beads in gold mounts separated by tiny links; the other of twenty-eight half-round beads in gold mounts. (N. Y. Private Owner)

270. LOT OF GOLD AND GOLD-PLATED ARTICLES

85- Comprising pair of gold-plated cuff links; gold-mounted compass; gold-mounted clip; three gold and gold-filled knives; gold-mounted pencil; carved wood charm; gold-mounted brocade case; and gold-filled cigarette lighter. Together with repoussé silver parasol handle and silver box. [Lot.] (Rogers)

271. THREE IMITATION PEARL NECKLACES

40- Two two-strand necklaces and one of three strands; two with sterling silver clasps. (Rogers)

272. GOLD MESH BAG

57.10- Fourteen-carat gold clasp with engraved ornamentation. (Rogers)

273. GENTLEMAN'S OPEN-FACE POCKET WATCH

79.50- Eighteen-carat gold case, jewel movement; by Tiffany & Co. Back with engraved gram. (Rogers)

274. GENTLEMAN'S OPEN-FACE POCKET WATCH

290- Eighteen-carat gold case fitted with jeweled and chiming movement; made by Tiffany & Co. Black monogram. (Rogers)

275. RUBY AND DIAMOND PLAQUETTE

165- Oval plaque of yellow gold set with five irregular-shaped rubies and four diamonds. Together with an East Indian bracelet, broken. (Rogers)

276. PAIR BLACK PEARL EARRINGS

95- Button-shaped pearl with platinum mount, weight of each approximately 1.5 grains. (Rogers)

277. SEVEN GENTLEMAN'S SHIRT STUDS

115- Four with baroque pearls and three with cabochon emeralds, with gold mounts by Tiffany & Co. (Rogers)

2 TWO GENTLEMAN'S GOLD WATCH CHAINS

oval links, one with gold cigar cutter. Together with a small gold chain. (N. Y. Private Owner)

100-

2 TWO PAIRS CUFF LINKS

one of gold and platinum set with cabochon sapphires and round-cut diamonds; one of gold with mother of pearl and tiny seed pearl. (N. Y. Private Owner)

80-

1 GENTLEMAN'S GOLD OPEN-FACE POCKET WATCH

seventeen-carat gold case, seventeen-jewel, eight-adjustment Vacheron & Constantin movement. (N. Y. Private Owner)

65-

1 SAPPHIRE- AND DIAMOND-MOUNTED PENDANT WITH CHAIN

pendant set with four sapphires suspended from one old-mine and six rose-cut diamonds and three baroque pearls; gold link chain with thirteen sapphires and six small round-cut diamonds. Together with pair of matching earrings. (N. Y. Private Owner)

210-

1 LOT OF JADE JEWELRY

comprising jade necklace centred with carved jade and with gilded filigree silver rim; gold-mounted oblong carved jade brooch set with imitation diamonds and rubines; oval filigree silver and jade brooch; and pair of jade drop earrings. (N. Y. Private Owner) (Burleigh)

70-

1 PAIR PLATINUM-MOUNTED BROOCHES

gold mounts with platinum tops set with small round-cut diamonds, sapphires and rubies. (Burleigh)

185-

1 RUBY-MOUNTED GOLD AND ENAMELED PENDANT

pendant with enamel female bust, woven 'Etruscan' style gold chain. (N. Y. Private Owner)

200-

1 SAPPHIRE AND DIAMOND RING

gold mount with two small round-cut diamonds and square-cut sapphire. (N. Y. Private Owner)

185-

1 DIAMOND AND JADE RING

yellow gold mount set with an oval plaquette of *fei-ts'ui* jade; the engraved yellow gold mount set with six small round-cut diamonds. (California Private Owner)

735-

287. AMETHYST RING

95- Cabochon amethyst in platinum mount set with approximately seventy rose diamonds, two missing. (*N. Y. Private Owner*)

288. DIAMOND-, SAPPHIRE- AND JADE-MOUNTED BLACK SILK VANITY

370- Black moiré silk vanity set with a pierced carved green jade plaque; a band of platinum, small round diamonds and two small cabochon sapphires and with pierced and carved green jade bead mounted with small round diamonds and cabochon sapphires. (*Rogers*)

289. LOT OF GOLD AND GOLD-PLATED ARTICLES

300- Engraved gold needle case; gold tie clasp; two gold match holders; one engraved cigar lighter; six studs, three set with jade and three with tiny pearls; single cuff link; two pairs of gold cuff buttons; gold lipstick holder; gold-plated cigar cutter; two oval brooches, one with pair of earrings to match; white gold mounted fob; white gold ring mount; four gold rings, one broken; and a compass with nickel-plated case. Together with a gold and gold-plated watch with red enameling and initials *SS*; carved ivory needlecage; 'fighting' charm; and gold-plated comb. [Lot.] (*Rogers*)

290. LOT OF GOLD JEWELRY

80- Six scarf pins mounted with opals, diamonds, garnet and seed pearls. Together with two gold collar pins, brooch in the form of a riding crop mounted with platinum tips and set with small round diamonds, and another set with a figure of a polo player. [Lot.] (*Rogers*)

291. DIAMOND-MOUNTED PLATINUM BUCKLE

195- On black velvet ribbon and set with approximately sixty-two small round diamonds. (*Rogers*)

292. PAIR DIAMOND-MOUNTED AND SEED PEARL EARRINGS

170- Together with seed pearl and baroque pearl pendant. (*Property of an Estate*)

293. IMITATION EMERALD AND DIAMOND RING

105- Imitation cabochon emerald surrounded by an outer circle of nineteen old-cut diamonds in yellow gold mount. (*Property of an Estate*)

28. GOLD-MOUNTED DIAMOND AND PEARL STICK PIN
 Centre with single pearl surrounded by ten small diamonds. (*Property of an
 estate*)

65-

29. DIAMOND AND PEARL GOLD-MOUNTED RING
 Centre with one old-mine diamond weighing approximately .70 carat and ten dia-
 monds weighing approximately .60 carat centred with pearl. (*Burleigh*)

210-

30. DIAMOND AND SAPPHIRE-MOUNTED PLATINUM AND GOLD BROOCH
 Centre with four diamonds weighing approximately .60 carat and three cabochon
 sapphires. (*Burleigh*)

145-

31. DIAMOND-MOUNTED BROOCH
 Crescent shape, set with approximately twenty-one small old-mine diamonds;
 yellow gold mount with platinum top; by Tiffany & Co. (*Burleigh*)

220-

32. RUBY AND DIAMOND RING
 Centre set with an oval faceted ruby surrounded by fourteen small old-mine
 diamonds; total weight of diamonds about 1 carat; yellow gold mount. (*Bur-
 leigh*)

310-

33. SAPPHIRE, DIAMOND AND PEARL BROOCH
 Circular brooch set with nine round faceted sapphires, ten small pearls and
 approximately, six small rose diamonds; yellow gold mount. Together with a
 ruby and diamond brooch set with approximately eight pale rubies and eight
 old-mine diamonds. (*Burleigh*)

110-

34. CABOCHON EMERALD RING
 Yellow engraved gold mount by Tiffany & Company. (*N. Y. Private
 Owner*)

310-

35. SAPPHIRE AND GOLD DRESS SET
 Comprising pair of cuff buttons, four shirt studs, and three vest buttons, each
 with a cabochon sapphire. (*N. Y. Private Owner*)

105-



[NUMBER 302]

340 302. DIAMOND- AND SAPPHIRE-MOUNTED BUTTERFLY BROOCH

Of yellow gold mounted with two small sapphires, two tiny cabochon pearls and approximately fifty-one old-mine diamonds. (*California Private Collection*)

[See illustration]

160 303. DIAMOND-MOUNTED AND ENAMELED PENDANT WATCH ON PEARL-MOUNTED PLATINUM CHAIN

Circular watch set with seventeen-jewel movement; the back with platinum ornamentation mounted with rose and round diamonds on a blue enamel ground; the chain with nineteen small round pearls. (*N. Y. Private Collection*)



[NUMBER 304]

34. AGATE-MOUNTED DESK CLOCK

enameled gold frame, the outer rim of agate; the platinum hands mounted with rose diamonds; by Cartier, Paris. (N. Y. Private Owner)

Diameter $3\frac{1}{2}$ inches

[See illustration]

160-

35. GOLD VANITY CASE WITH CHAIN

Eighteen-carat engraved gold case, the clasp with cabochon sapphire. (Rogers)

185-

36. PLATINUM, DIAMOND AND RUBY BUTTERFLY PIN

with approximately fifty-six small round diamonds and two small cabochon rubies. (Rogers)

235-

307. LOT OF BRILLIANTS, ETC.

480- One package with three, one with approximately twenty-seven, a small rose diamond with gold mount, a package with seven rose diamonds. [Lot.] (Rogers)

308. NECKLACE OF IMITATION PEARLS

950- With four pear-shaped platinum mounts set with round-cut diamonds. (Rogers)

309. CULTURED PEARL NECKLACE

420- Of sixty-seven graduated round beads; platinum clasp set with one large and ten small round diamonds, having a total weight of approximately 1.50 carats. (de Rose)

310. CULTURED PEARL NECKLACE

190- Of approximately one hundred thirteen graduated round beads; platinum clasp set with one diamond-shaped diamond, thirty-two small round-cut and eight small calibre-cut rubies. (Property of an Estate)

311. FOURTEEN-CARAT GOLD LINK BRACELET WITH CHARMS

160- With eight charms mounted in carnelian, topaz, and horse's-head seal; all set in fine gold mounts. Together with a single gold charm with intaglio-cut carnelian. (N. Y. Private Owner)

312. LADY'S DIAMOND-MOUNTED, GOLD AND PLATINUM WRIST WATCH

170- Watch with platinum top and gold back mounted with six round and six sixty-four rose diamonds; black silk strap with gold clasp and platinum gold buckle, set with about twenty-eight rose diamonds; by Cartier. (Rogers)

313. CULTURED PEARL NECKLACE

180- Of approximately four hundred eight small round pearls. (Rogers)

314. DIAMOND-MOUNTED BLACK SUEDE BAG

275- With platinum clasp set with approximately three hundred five rose diamonds by Cartier, Paris. (Rogers)

315. DIAMOND-MOUNTED PLATINUM BARRETTE

580- Oval barrette set with approximately two hundred eight rose diamonds, ten round diamonds and one oval diamond. (Rogers)

316. DIAMOND AND PLATINUM WRIST WATCH

275- Oblong case set with approximately fifty-two small round-cut diamonds; fitted with eighteen jewel, five-adjustment movement by Tempore Watch Company; platinum mesh band with two small platinum bands each set with three small diamonds. (N. Y. Private Owner)

[See illustration]



[NUMBER 316]

317. EMERALD-, RUBY- AND SAPPHIRE-MOUNTED CLIP

280- Oval clip of yellow gold mounted with cabochon emerald, approximately twenty-six cabochon rubies and eleven leaf-carved sapphires; Cartier, F. (Rogers)

318. PACKAGE CONTAINING FIVE EMERALDS

1.225- (Rogers)

319. DIAMOND-MOUNTED ENAMELED PENDANT WATCH

345- Circular watch with pierced platinum mount set with rose and round-cut diamonds; in blue enamel case suspended from pierced floral medallion mount with rose and round diamonds. (Property of an Estate)

320. DIAMOND-MOUNTED LORGNETTE, WITH PEARL- AND DIAMOND-MOUNTED CHAIN

1.700- Oblong lorgnette mounted with small round-cut diamonds, one missing; chain of small pearls and with two platinum ornaments mounted with small round-cut diamonds; by Cartier. (Rogers)

321. NEPHRITE BEAD NECKLACE WITH DIAMOND-PAVED WATCH PENDANT

1.600- Necklace of forty-nine irregular-shaped green nephrite beads and eighteen platinum round beads mounted with tiny round-cut diamonds. Oval watch pendant with one marquise and small round diamonds and suspended from two round and two flat round beads set with small square-cut and round faceted diamonds and a single triangular diamond. (Rogers)

322. ALEXANDRITE RING

1.150- Fine faceted Alexandrite in engraved platinum mount, the shank set with eight small round-cut diamonds. (Property of an Estate)

323. EMERALD AND DIAMOND CLUSTER RING

1.200- Oval faceted emerald of fine green color surrounded by approximately fourty round-cut diamonds having a total weight of approximately 1.50 carats. (Burleigh)

324. ORIENTAL PEARL NECKLACE

350- Beautifully matched necklace containing one hundred graduated round Oriental pearls having a total weight of approximately 230 grains; gold snap with platinum top set with four small square-cut rubies and four old-mine diamonds. (Lewis)

[See illustration]

325. EMERALD, PEARL AND GARNET BEAD NECKLACE

1.475- Composed of thirteen large and eighty-six small emerald beads, twenty-six garnet beads, twenty-six onyx beads, and twenty-six pearls. (Rogers)



[NUMBER 324]



[NUMBER 326]

326. PAIR SAPPHIRE AND DIAMOND EARRINGS

665- Each earring set with approximately twenty-six small round-cut diamonds and six calibre-cut sapphires, one diamond missing. Total weight of diamonds approximately 4.50 carats. (*Property of an Estate*)

[See illustration]

327. EMERALD RING

460- Emerald weighing approximately 4.20 carats; platinum mount set at shank with two small baguette diamonds. (*N. Y. Private Owner*)

328. PEARL AND DIAMOND NECKLACE

675- Double strand of pearls divided by clusters from which depend two tassels of diamonds and pearls. One hundred seventy diamonds with an approximate weight of 3 carats and approximately five hundred seed pearls. (*Burleigh*)

329. DIAMOND BROOCH

940- In the form of a buckle set with approximately two hundred ninety-six small round diamonds. (*Rogers*)

330. PACKAGE CONTAINING APPROXIMATELY TWELVE HUNDRED BRILLIANT DIAMONDS
(*Rogers*)



[NUMBER 331]

3. GOLD BROCADE EVENING BAG

figured black and gold brocade; the clasp and handle fitted with diamond-
emerald-mounted ball-shaped beads on platinum and gold and with en-
ed gold pendant set with sapphires, turquoises and rubies. (*Rogers*)

870-

[See illustration]



[NUMBER 332]

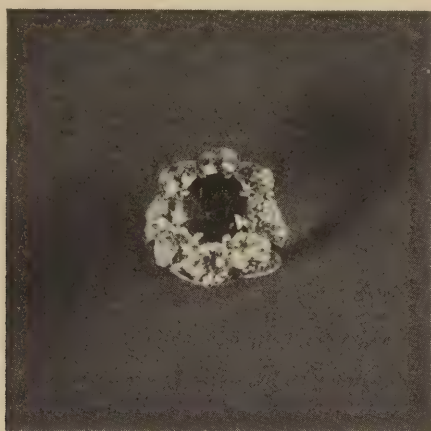
332. BEADWORK BAG

730 Woven with an all-over floral design in natural colors; the enamel gold set with fifty-four small cabochon rubies; the knob handle of black enamel, eight small rubies and seventeen small round-cut diamonds; black silk with two diamond-mounted platinum circlets. By Cartier, Paris. (Roger

[See illustration]

770 333. DIAMOND-MOUNTED PLATINUM FLEXIBLE BRACELET

Set with twenty large round and approximately forty small round diamonds on a flexible platinum mount. Total weight of diamonds approximately 3.50 carats. (N. Y. Private Collector)



[NUMBER 334]

3. RUBY AND DIAMOND CLUSTER RING

oval faceted ruby surrounded by eight old-mine diamonds, yellow gold mount, set with two old-mine diamonds; total weight of diamonds approximately 1.800- carats. (*Burleigh*)

1,800-

[See illustration]

4. PLATINUM AND DIAMOND SQUARE-TOP DINNER RING

centered with a single diamond weighing approximately .85 carat and approximately seventy-five small diamonds. (*Property of an Estate*)

475-



[NUMBER 336]

375 336. DIAMOND-MOUNTED PLATINUM WRIST WATCH

Octagonal-shaped watch, the outer rim set with small round-cut diamonds with platinum mesh band. (*Property of an Estate*)

[See illustration]

H40 337. DIAMOND-MOUNTED PLATINUM NECKLACE

Mounted with thirty-three small round-cut diamonds having a total weight approximately 3.25 carats. (*Property of an Estate*)



[NUMBER 338]

DIAMOND-MOUNTED ENAMELED GOLD FLORAL SPRAY
 al spray of heliotrope and leaves enameled in naturalistic colors and set
 it rose and round-cut diamonds; on yellow gold stem. (*California Private*
er)

1125-

Note: Made by Tiffany & Co. for Exhibition at the Paris Exposition of
 1889.

[See illustration]

339. DIAMOND AND PLATINUM PENDANT WATCH

410 Oblong platinum case with jewel movement and set with approximately seven small round-cut diamonds and with diamond-mounted platinum chain with approximately forty-two small round diamonds. Total weight of diamonds approximately 2 carats. (*Property of an Estate*)

340. DIAMOND NECKLACE WITH PEARL PENDANTS

1.700 Gold and silver mount set with approximately one hundred fifty-three old diamonds having a total weight of approximately 5 carats; and two pearl-pearl drops. (*California Private Owner*)

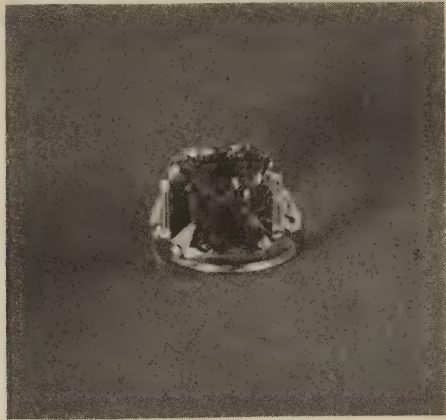
[See illustration]

341. CABOCHON RUBY AND DIAMOND RING

1.225 Cabochon ruby weighing approximately 15 carats in platinum mount set with two kite-shaped diamonds. (*N. Y. Private Owner*)



[NUMBER 340] *Reduced*



[NUMBER 342]

342. SAPPHERE RING

700- Square faceted sapphire weighing approximately 8.50 carats, in platinum r
shank set with eleven baguettes and twelve small round diamonds. (2
Private Owner)

[See illustration]



[NUMBER 343]

DIAMOND AND ONYX THREE-CIRCLE BROOCH

Set with thirty-four round-cut diamonds having a total weight of approximately 3.40 carats and approximately thirty-six onyxes; platinum mounted on gold pin. (*Property of an Estate*)

650-

[See illustration]



[NUMBER 344]

344. DIAMOND-MOUNTED PLATINUM BROOCH

750- Round brooch of floral design set with approximately sixty-seven round rose-cut diamonds having a total weight of approximately 4 carats. (*Proceedings of an Estate*)

[See illustration]

345. DIAMOND-MOUNTED VELVET COLLARETTE

550- With triple festoon decoration of diamond-mounted platinum, the end of a platinum mount. Total weight of diamonds approximately 5 carats. (*Proceedings of an Estate*)



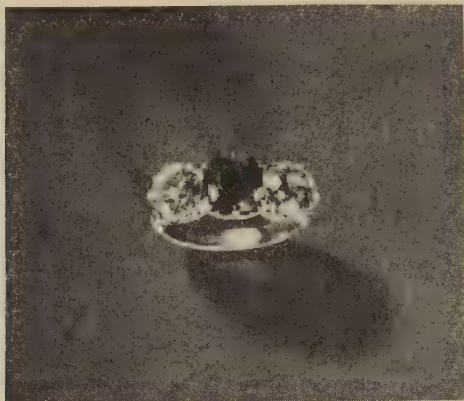
[NUMBER 346]

GOLD-MOUNTED DIAMOND SUNBURST

Containing approximately ninety-six small old-mine diamonds centred with old-mine diamond weighing approximately .90 carat. (*Burleigh*)

760-

[See illustration]



[NUMBER 347]

347. EMERALD AND DIAMOND RING

1,005- Engraved gold mount set with two round-cut diamonds each weighing approximately 1.25 carats and with a faceted emerald. (*Property of an Estate*)

[See illustration]

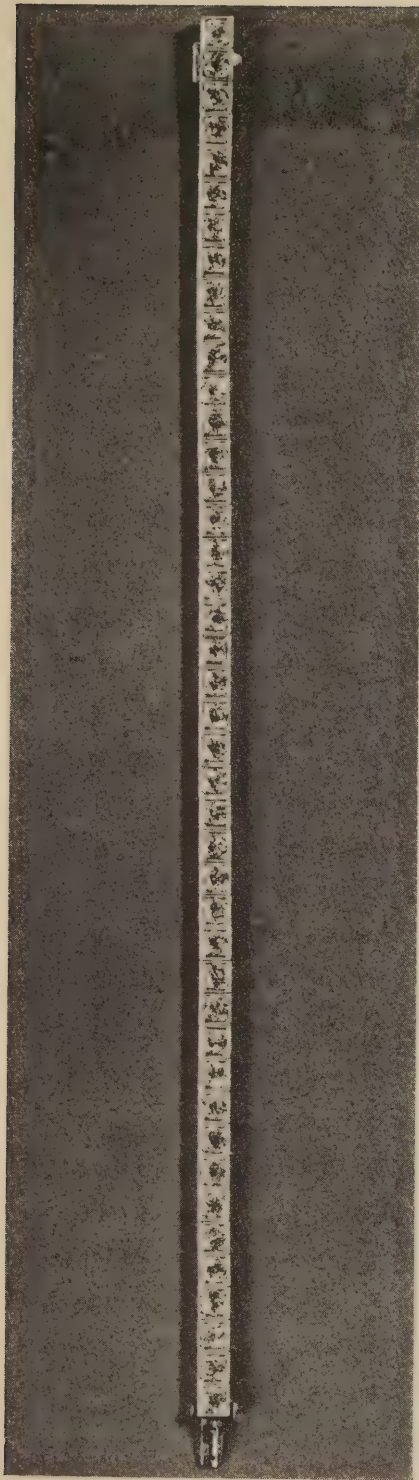
348. LOT OF UNSET STONES

1,025- Comprising approximately forty diamonds having a total weight of approximately 4.30 carats; a ruby weighing approximately 1.27 carats; and a sapphire weighing approximately .20 carat. [Lot.] (*Property of an Estate*)

349. DIAMOND STRAIGHT-LINE BRACELET

885- Flexible platinum mount set with forty-three small round-cut diamonds having a total weight of approximately 4.30 carats. (*Property of an Estate*)

[See illustration]



[NUMBER 349]

350. EMERALD AND DIAMOND BRACELET

1.290
Flexible platinum mount set with approximately fifty small calibre-cut emeralds, eleven square, one oblong and approximately one hundred sixty small round-cut diamonds. (*N. Y. Private Owner*)

[See illustration]



[NUMBER 350]

351. DIAMOND-MOUNTED PLATINUM BRACELET

2,000
Composed of one large oblong and three small links separated by three of oval and small square links and with enameled 'bluebird' decoration; finished in platinum mount set with approximately three hundred five diamonds weighing about 6.50 carats. Needs repair. (*Burleigh*)

[See illustration]



[NUMBER 351]



[NUMBER 352]

352. GARNET BEAD AND PEARL BRACELET WITH EMERALD AND
DIAMOND CLASP

1,200 Six-strand bracelet of garnet beads and pearls; the platinum clasp set
single cabochon emerald and mounted with approximately ninety small
cut diamonds. (*Rogers*)

[See illustration]



[NUMBER 353]

DIAMOND, EMERALD, RUBY AND SAPPHIRE BROOCH

In miniature bust portrait of the Emperor Maximilian painted on ivory and
 posed in gold frame surrounded by twenty-seven old-mine diamonds and
 eight old-mine diamond pendants suspended from a crown set with a small
 and approximately twenty-eight small rubies and twenty-nine old-mine-
 diamonds and one square-cut imitation sapphire; yellow gold mount. Total
 weight of diamonds approximately 6.75 carats. (*Property of an Estate*)

1,300-

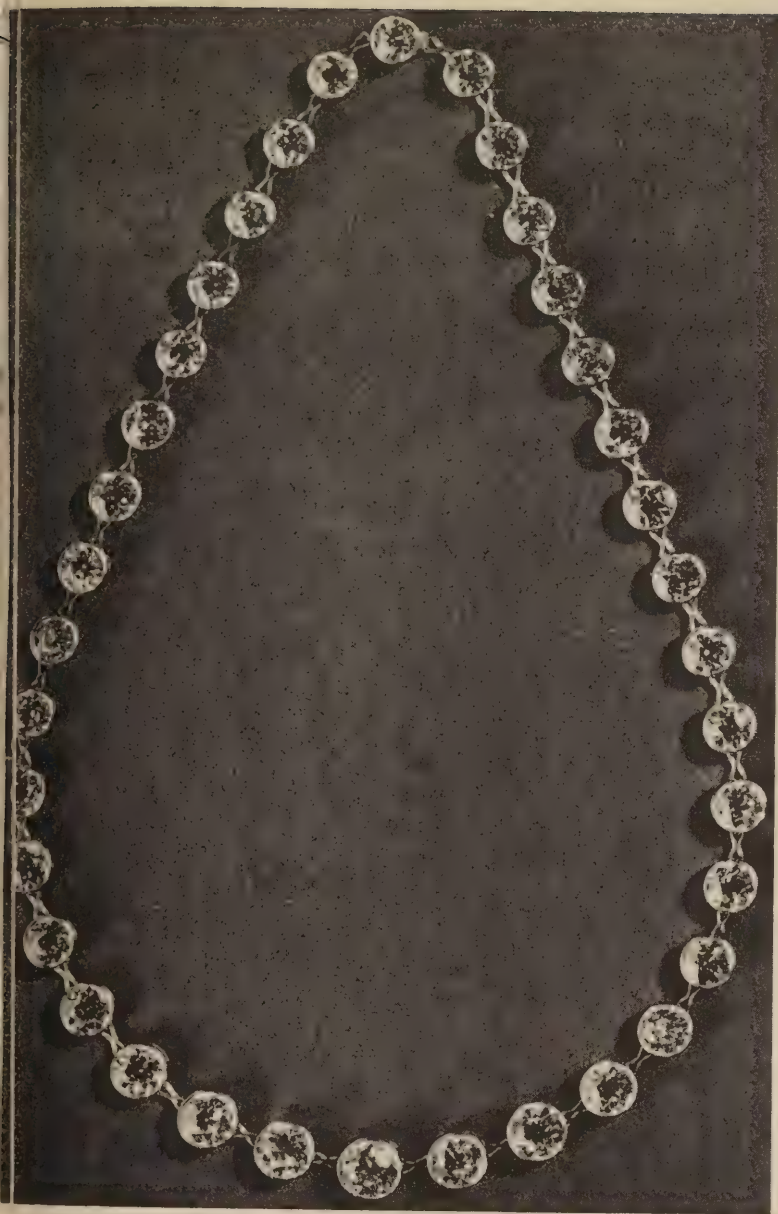
[See illustration]

354. DIAMOND NECKLACE

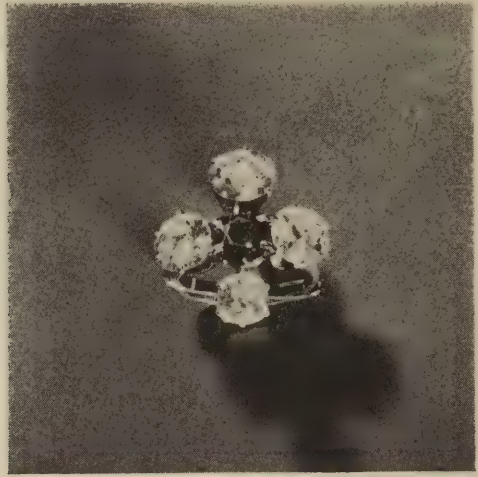
12.600

Thirty-six round-cut diamonds in gold and platinum mount and with set with small round-cut diamonds. Total weight of diamonds approximately 40.50 carats. (*Property of an Estate*)

[See illustration]



[NUMBER 354]



[NUMBER 355]

355. DIAMOND AND SAPPHIRE RING

1,200- Four round-cut diamonds and one sapphire; total weight of diamonds approximately 4.80 carats. Yellow gold mount. (*Property of an Estate*)

[See illustration]



[NUMBER 356]

CANARY DIAMOND RING

and weighing approximately 3 carats and surrounded by approximately
hundred twenty small diamonds having a total weight of about 1.20 carats;
mount. (*Rogers*)

1.175-

[See illustration]

1.325 357. DIAMOND STRAIGHT-LINE BRACELET

Flexible platinum mount set with forty-eight round-cut diamonds having a total weight of about 7 carats. (*Property of an Estate*)

[See illustration]



[NUMBER 357]



[NUMBER 358]

825- 358. SAPPHIRE- RUBY- AND DIAMOND-MOUNTED WATCH BRACELET
Bracelet of yellow gold mounted with eight cabochon sapphires, eight cabochon rubies, and thirty-three small round diamonds, and circular Movado watch made by Seaman Schepps. (N. Y. Private Owner)

[See illustration]

850- 359. DIAMOND-MOUNTED PLATINUM NECKLACE

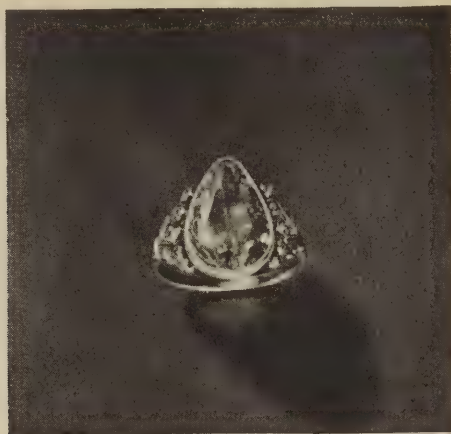
Flexible platinum necklace with bowknot centre mounted with approximately one hundred twenty-two small round-cut diamonds having a total weight approximately 6 carats. Three small stones missing. (Property of an Estate)

[See illustration]



[NUMBER 359]

Reduced



[NUMBER 360]

625 360. DIAMOND RING

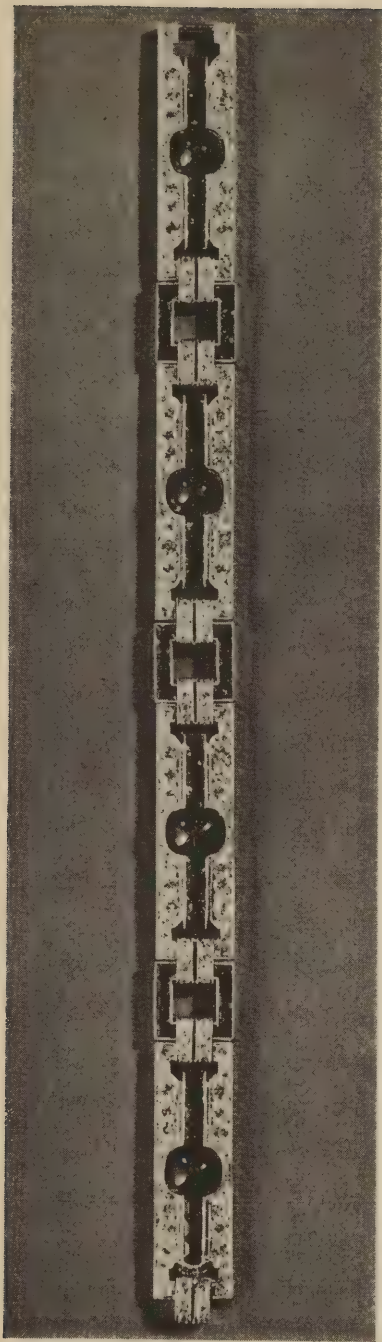
Pear-shaped diamond in platinum mount, the shank set with approximately fourteen small round diamonds. (*Property of an Estate*)

[See illustration]

1.525 361. SAPPHIRE AND DIAMOND BRACELET

Flexible platinum mount set with four cabochon sapphires, sixty-two calibre sapphires and approximately one hundred sixty-eight round diamonds having total weight of about 6 carats. (*N. Y. Private Owner*)

[See illustration]



[NUMBER 361]



[NUMBER 362]

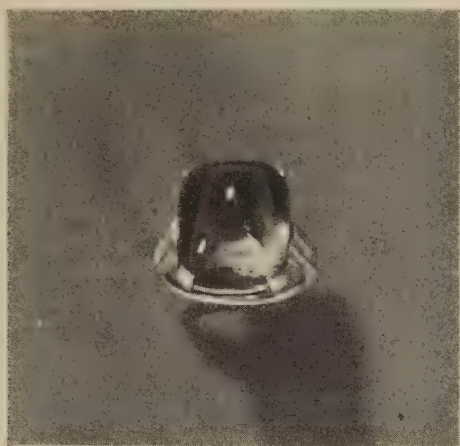
362. GOLD-MOUNTED DIAMOND SUNBURST

1.500- Containing approximately fifty-one old-mine diamonds centred with single old-mine diamond weighing approximately 1.25 carats. Total weight of diamonds approximately 7.50 carats. (*Burleigh*)

[See illustration]

363. DIAMOND-MOUNTED EMERALD PENDANT

3.450- Oblong faceted emerald in diamond-mounted platinum frame set with approximately thirty-five round-cut diamonds; the weight of emerald about 3.50 carats. (*Rogers*)



[NUMBER 364]

4 CABOCHON EMERALD RING

cabochon emerald weighing approximately 12 carats; platinum mount with two baguette and approximately twenty-six small round-cut diamonds; by Cartier.
(27ers)

7.700-

[See illustration]

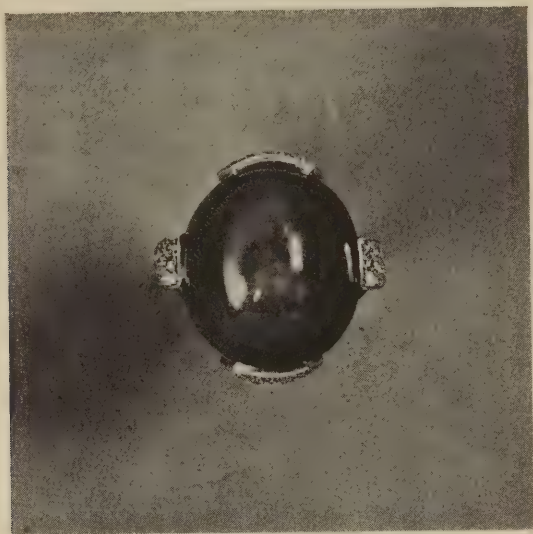
365. SAPPHIRE AND DIAMOND BRACELET

1300 Set with approximately one hundred sixty small round diamonds having a total weight of about 7 carats, and about two hundred fourteen tiny sapphires, some missing; flexible platinum mount. (*Property of an Estate*)

[See illustration]



[NUMBER 365]



[NUMBER 366]

366. STAR SAPPHIRE RING

1.750-
Sapphire weighing approximately 95 carats in gold mount set with sixteen rubies and fifty-six small round diamonds set in platinum. (N. Y. Estate Owner)

[See illustration]

367. DIAMOND BRACELET

4.300-
The flexible platinum mount set with three large and approximately hundred fifty-six small round-cut diamonds and forty-eight baguettes having total weight of approximately 14 carats. (Property of an Estate)

[See illustration]



[NUMBER 367]

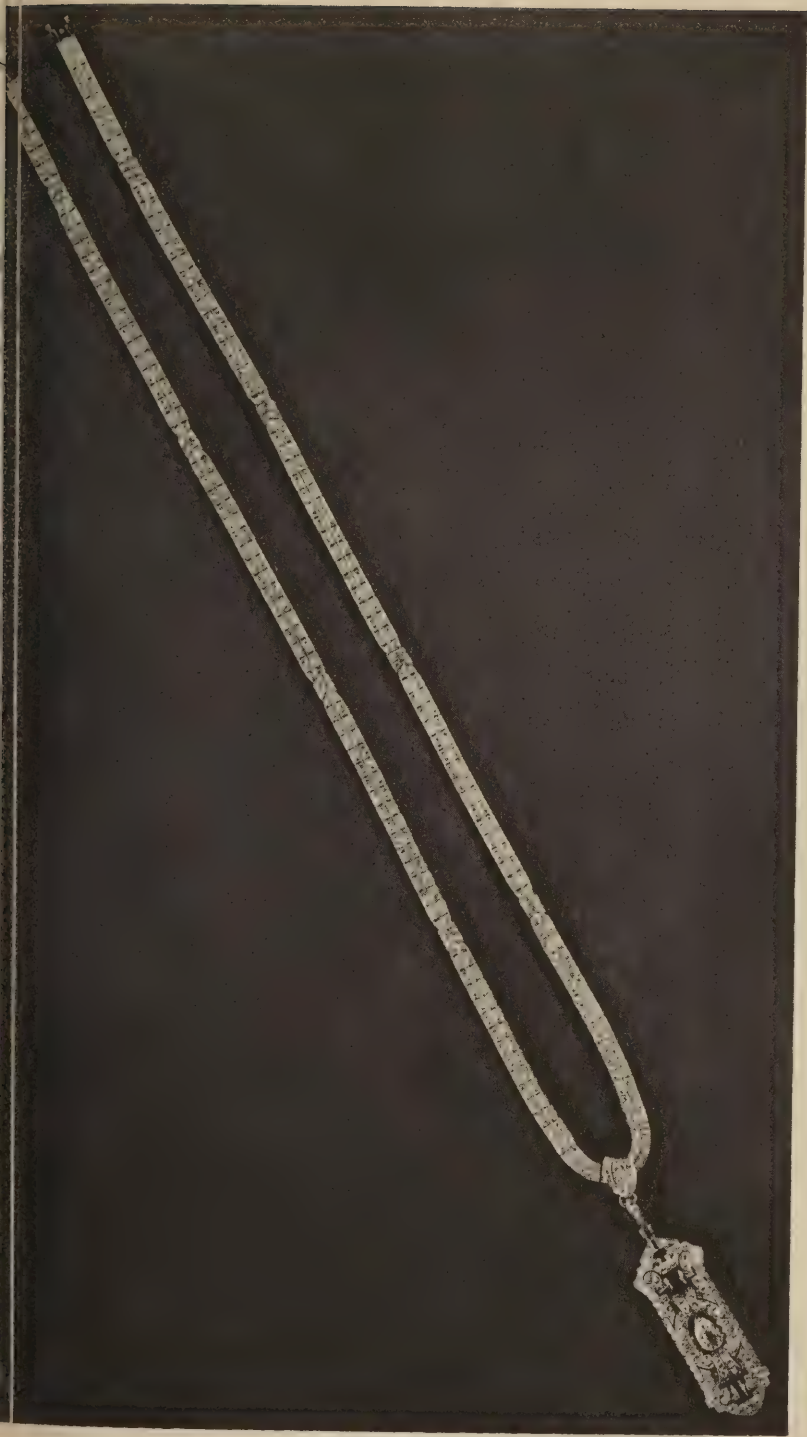
368. DIAMOND NECKLACE WITH DIAMOND PENDANT

3.800- The platinum link necklace with approximately six hundred and fifty-eight round diamonds; oblong pendant set at centre with a single pear-shaped diamond surrounded by eight baguettes and approximately one hundred sixty-four round diamonds. Total weight of diamonds about 13 carats. (*Property Estate*)

[See illustration]

950 369. DIAMOND

Unset oblong-shaped diamond weighing approximately 5.50 carats. (*Private Owner*)



[NUMBER 368] *Reduced*



[NUMBER 370]

370. DIAMOND-MOUNTED BROOCH

Gold and platinum mount set with four pear-shaped diamonds and approximately two hundred sixty-five round-cut diamonds having a total weight about 11.50 carats. (*Rogers*)

3,900

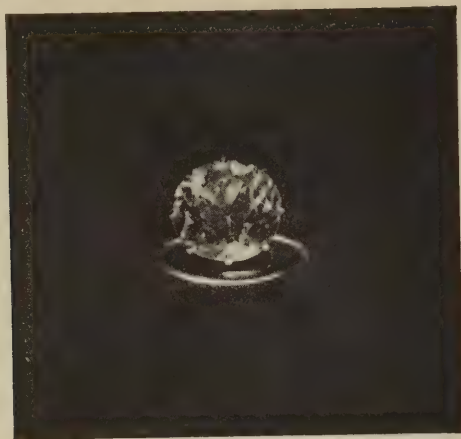
[See illustration]



[NUMBER 371]

DIAMOND- AND PLATINUM-MOUNTED TORTOISE-SHELL COMB
 with three pear-shaped diamonds having a total weight of approximately 4 2,800-
 at and about three hundred seventy-two small round and oval diamonds.
 (ers)

[See illustration]



[NUMBER 372]

372. DIAMOND RING

Round-cut diamond weighing approximately 9 carats; platinum mount.

Private Owner)

5.000

[See illustration]



[NUMBER 373]

DIAMOND CLIP

with approximately eighty-two round-cut diamonds having a total weight of approximately 17 carats; platinum mount by Cartier. (*Property of an Estate*)

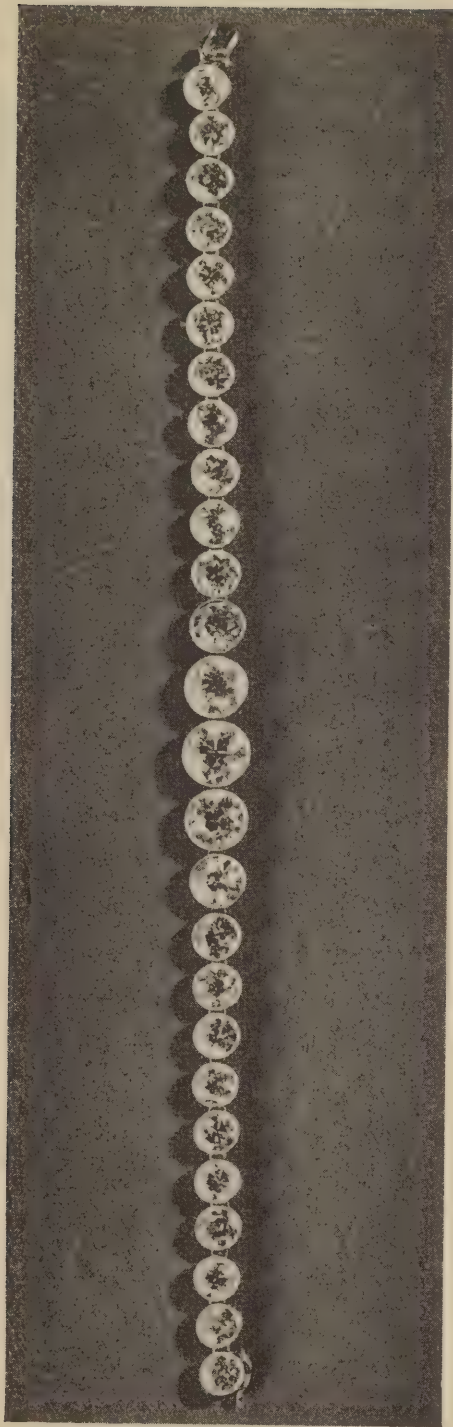
4700-

[See illustration]

374. DIAMOND BRACELET

J. 500 Twenty-six round diamonds; platinum mount. Total weight of approximately 22 carats. (*Property of an Estate*)

[See illustration]



[NUMBER 374]



[NUMBER 375]

375. DIAMOND BROOCH

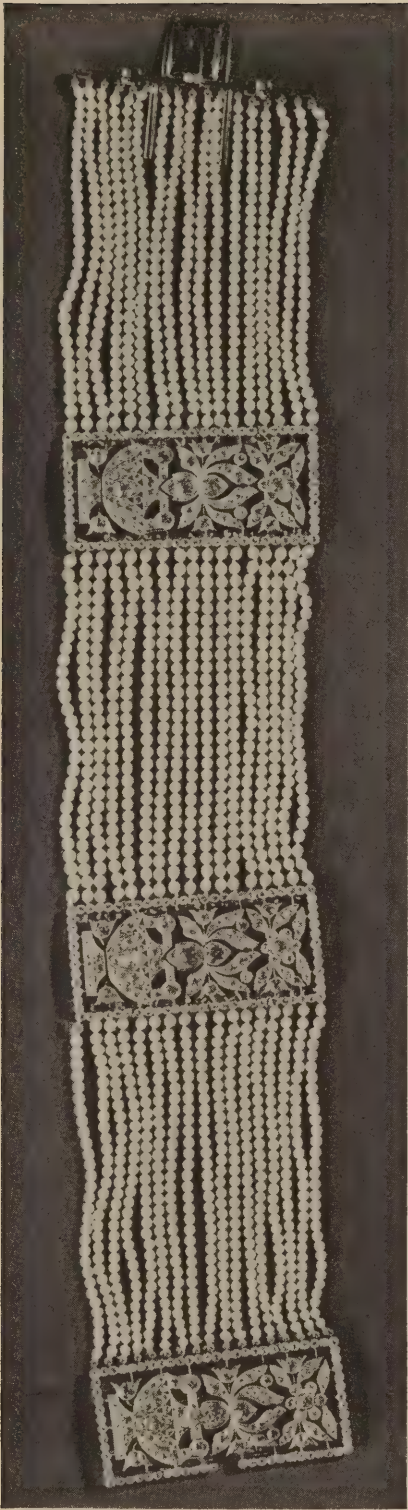
6.600- Yellow gold mount with platinum top set with approximately three hundred and thirty-five old-mine diamonds and a large centre diamond weighing approximately 6 carats; one small diamond missing. Total weight of diamonds 23 carats. (N. Y. Private Owner)

[See illustration]

376. PLATINUM, DIAMOND AND PEARL COLLARETTE

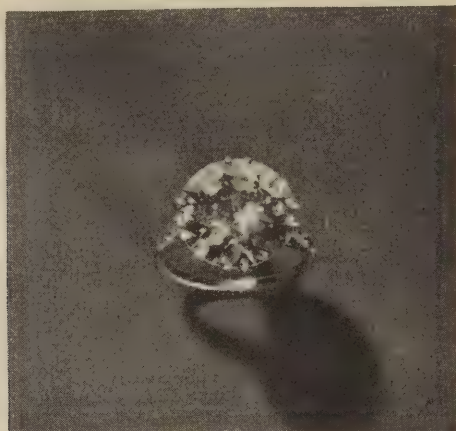
3.100- Seventeen-strand pearl collar containing approximately fifteen hundred and eighty small round pearls averaging about .76 grain each and three plaquettes with floral design set with about five hundred forty-nine diamonds. (Rogers)

[See illustration]



[NUMBER 376]

Reduced

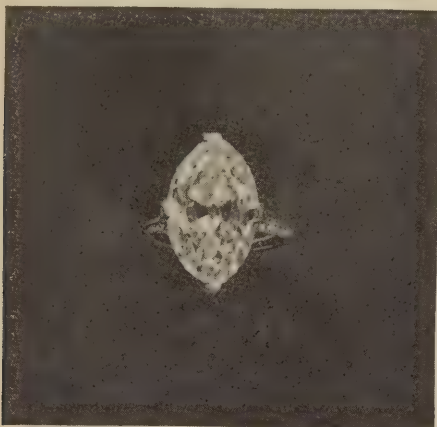


[NUMBER 377]

377. SOLITAIRE DIAMOND RING

9.500 Round-cut diamond weighing approximately 10 carats; platinum mount
shank set with ten small round-cut diamonds. (*Property of an Estate*)

[See illustration]



[NUMBER 378]

MARQUISE DIAMOND RING

Marquise diamond of fine color weighing approximately 8 carats; in platinum
the shank set with approximately sixty-four small round-cut diamonds.
(Kobach)

11,700-

[See illustration]

379. DIAMOND-MOUNTED PLATINUM BRACELET

6.200- The flexible platinum mount set at centre with a large round diamond v approximately 4.50 carats, approximately three hundred forty-two small diamonds and two baguettes. Total weight of diamonds approximate carats. (N. Y. Private Owner)

[See illustration]



[NUMBER 379]



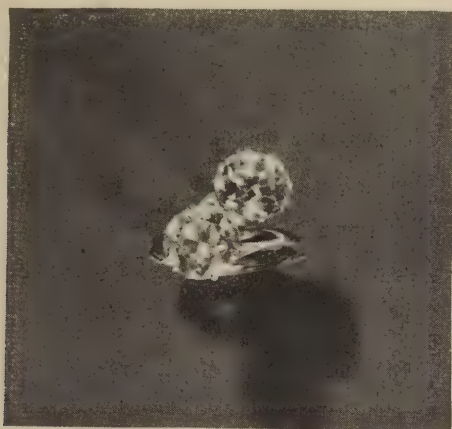
[NUMBER 380]

380. DIAMOND-MOUNTED PLATINUM CLIP

Tassel-shaped clip set with one pear-shaped, five large and approximately hundred twelve small round diamonds and thirty-nine baguettes having a weight of about 26 carats. (*Conn. Private Owner*)

4.100-

[See illustration]



[NUMBER 381]

TWO-STONE DIAMOND RING

gold mount set with two round-cut diamonds each weighing approxi-
el 3 carats. (*Property of an Estate*)

2500-

[See illustration]



[NUMBER 382]

382. DIAMOND-MOUNTED PLATINUM BROOCH

720- Wreath- and circle-shaped brooch set with approximately ninety-four round-cut diamonds and one pear-shaped pearl drop. By Cartier (Rogers)

[See illustration]



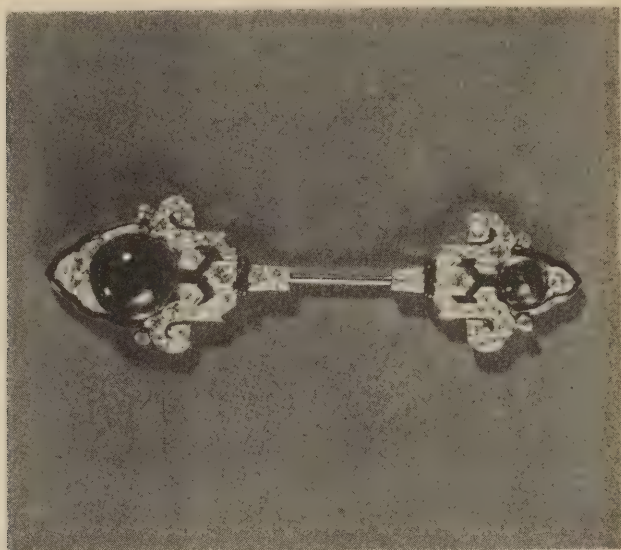
[NUMBER 383]

FAIR PLATINUM, DIAMOND AND PEARL EARRINGS

Earring with twenty-eight round-cut diamonds and pear-shaped pendant;
 Total weight of diamonds approximately 3 carats, the pearls about 11 grains
 (Rogers)

1.025 =

[See illustration]



[NUMBER 384]

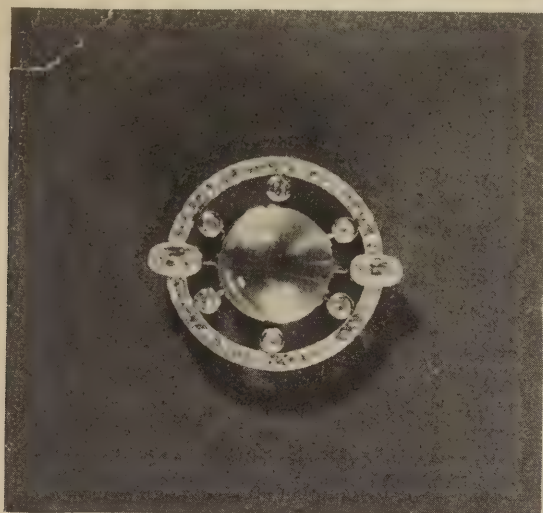
384. PLATINUM, DIAMOND AND CABOCHON EMERALD PIN

1.225 Set with one large and one small cabochon emerald and approximately 50 small round-cut diamonds; by Cartier. (Rogers)

[See illustration]

630 385. GOLD MESH BAG

The clasp monogrammed and set with a single cabochon sapphire and approximately seventy-one diamonds. (Rogers)



[NUMBER 386]

PLATINUM AND MOONSTONE DIAMOND BROOCH

ular brooch set with approximately forty-six small round-cut diamonds and oval diamonds and one moonstone; total weight of diamonds about 2.10 gms. (Rogers)

380-

[See illustration]

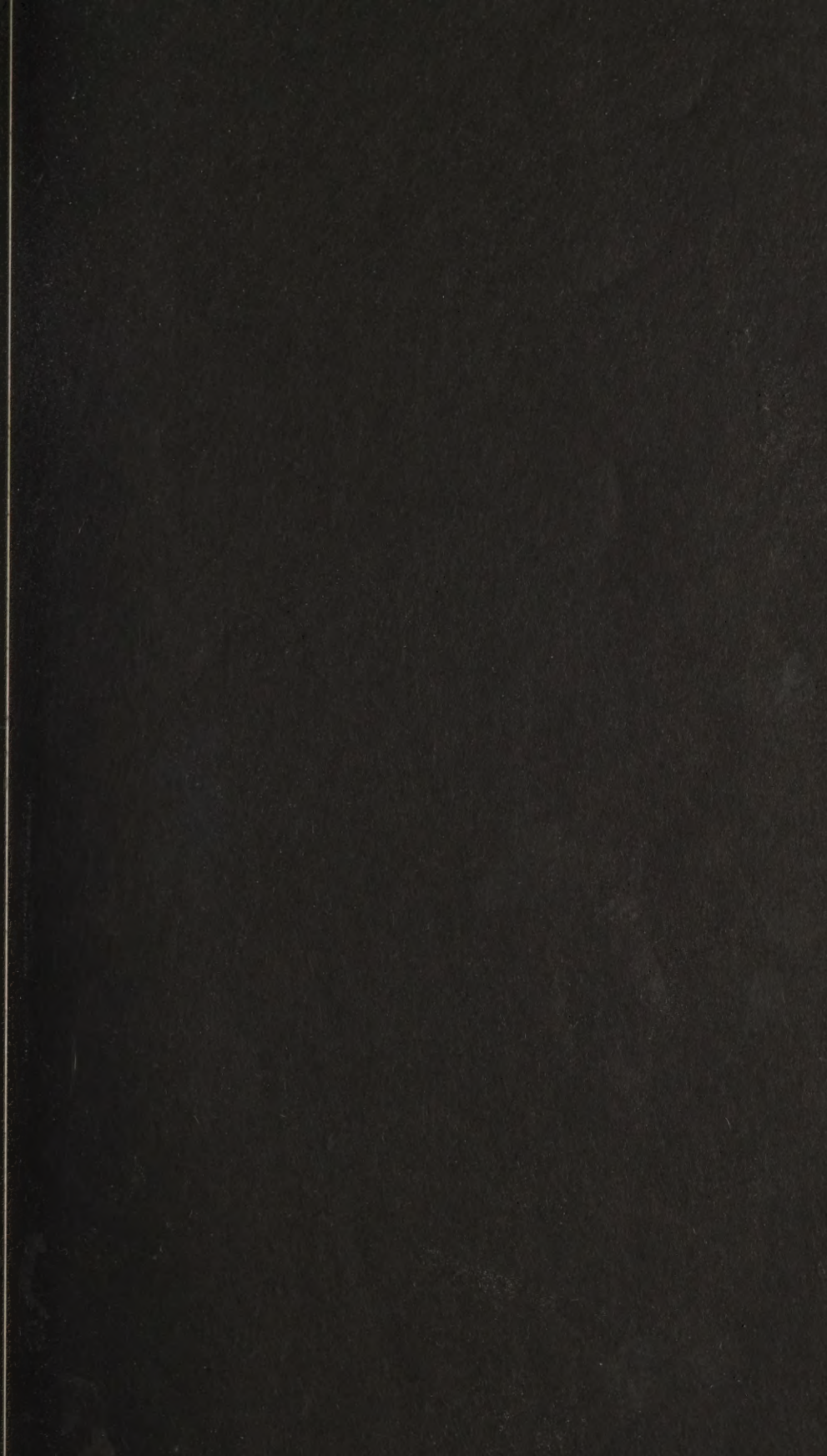
[END OF SALE]

1 Pension \$ 30.549^{re}
 2 " " 164.605-

 Total \$ 195.154^{re}

PARKE-BERNET GALLERIES • INC

*designs its catalogues and directs
all details of illustration, text
and typography*





THE METROPOLITAN
MUSEUM OF ART

Thomas J. Watson Library

